

Palouse Basin Water Rate Comparisons
PBAC Meeting
July 21, 2011

Pullman Water Rates

**SCHEDULE OF MONTHLY WATER SERVICE RATES
AND
ADDITIONAL AND SPECIAL CHARGES RELATED TO CITY WATER SERVICE.**

1. READY-TO-SERVE (BASE FEE) CHARGE AND VOLUME [P.C.C. 10A.35.010(1)(a)]

For Single Family Customers:

Monthly Charge Effective As Of:

Ready-To-Serve Charge

Meter Size (inches)	<u>11/1/2009</u>	<u>11/1/2010</u>	<u>11/1/2011</u>	<u>11/1/2012</u>	<u>11/1/2013</u>
3/4	\$ 19.25	\$ 20.50	\$ 21.75	\$ 23.00	\$ 24.25
1	30.25	32.30	34.30	36.25	38.25
1 1/2	49.05	52.25	55.40	58.60	61.80
2	73.00	77.75	82.45	87.20	91.95
3	128.50	136.85	145.20	153.55	161.90
4	198.55	211.45	224.35	237.25	250.15
6	385.40	410.40	435.45	460.45	485.50

Volume Charge/100 cf

November - May

501 cf - 800 cf
over 800 cf

<u>11/1/2009</u>	<u>11/1/2010</u>	<u>11/1/2011</u>	<u>11/1/2012</u>	<u>11/1/2013</u>
\$ 1.43	\$ 1.58	\$ 1.75	\$ 1.93	\$ 2.13
1.50	1.66	1.83	2.02	2.23

June - October

501 cf - 800 cf
801 cf - 2,000 cf
over 2,000 cf

<u>6/1/2010</u>	<u>6/1/2011</u>	<u>6/1/2012</u>	<u>6/1/2013</u>	<u>6/1/2014</u>
\$ 1.69	\$ 1.88	\$ 2.09	\$ 2.31	\$ 2.56
1.83	2.03	2.25	2.49	2.76
2.28	2.53	2.81	3.12	3.46

Moscow Water Rates

CITY OF MOSCOW FEE SCHEDULE	
RESOLUTION NO. 2010-	EXHIBIT "A"
EFFECTIVE 10-1-2010	
Water Service Rates	
A. Standard Monthly Rates	
1. Fixed charge	
a. Single family residential/Duplex/Tri-plex per meter (Definition is a single meter servicing each dwelling unit)	18.90
2. Consumption Charge for Residential/Duplex or Triplex (Definition serviced by a single meter per dwelling unit)	
a. 0-700 per cubic Feet	1.60 /CCF
b. 701-2000 per cubic feet	1.90 /CCF
c. Over 2000 cubic feet	3.25 /CCF

Colfax Water Rates



[Home](#)

Utility Billing

Water / Sewer Rates For 2011

Water	\$21.70	\$0.61 for each 100CF
--------------	----------------	------------------------------

Palouse Water Rates

SPECIAL COUNCIL MEETING -DRAFT ONLY **December 14, 2010**


OLD BUSINESS:

Water & Sewer Committee 2011 Water rate recommendations:

The committee has two options to propose: Option 1 - raise the **base rate** by \$5.50 and not adjust the overage rate. A \$5.50 increase per month, from \$17.50 to **\$23.00**, would most likely make us break even. Option 2 - raise base rate the same amount and increase the **overage** from \$1.00 per 100 cf to **\$1.25 per 100 cf**. The advantage to this plan is it would allow us to add to reserves for things like putting in a new water tower on the south hill; and developing a water system plan. Option 1 solves balancing the budget. Option 2 solves the budget and increases the reserve balance by approx. \$9,000. If we want the DOH to consider funding our WSP we have to promote conservation, which Option 2 does because heavy water users will carry more of a burden with overages.

Councilmember Wekenman **MOVED** to raise sewer by \$3.00, raise water by \$5.50 and raise overage by \$.25 per 100 cf, effective Feb. 1, 2011. Councilmember Snook seconded. Councilmember Newman publicly thanked Andy O'Neill of RCAC for his hours he put into this incredibly complicated study. The committee put a great deal of thought into what was fair and to solve our immediate problems. Clerk Beeson clarified that bills will still include the usual \$1.00 SCI for infrastructure and the \$5.00 for sewer reserve for debt payments. Motion carried unanimously.

Seattle Water Rates



[Departments](#) | [Services](#) | [Staff Directory](#) | [My.Seattle.Gov](#)

Seattle.gov
This Department

Seattle Public Utilities

[Home](#) | [Contact Us](#)

Reliable water, sewer, drainage & solid-waste services
Ray Hoffman, Director

Residential Drinking Water Rates

Effective: January 1, 2011 to December 31, 2011

Residential Commodity Charge per CCF (100 cubic feet)

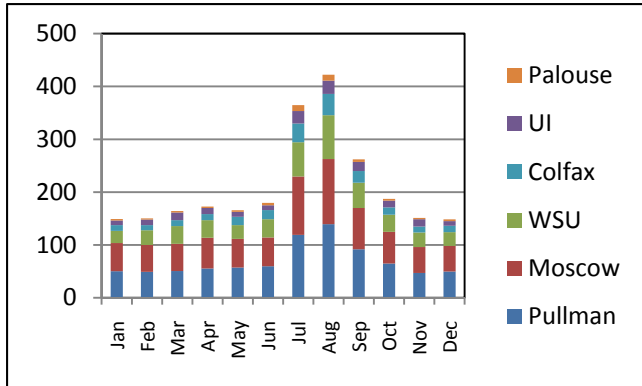
	Inside Seattle	Outside Seattle	Shoreline & Lk. Forest Park*
Off-Peak Usage (Sept. 16 - May 15th)	\$3.62	\$4.13	\$4.39
Peak Usage (May 16th - Sept. 15th)			
Up to 5 CCF per month	\$3.98	\$4.54	\$4.83
Next 13 CCF per month	\$4.63	\$5.28	\$5.62
Over 18 CCF per month	\$11.80	\$13.45	\$14.31

* These rates apply to the Cities of Shoreline and Lake Forest Park, not the water districts.

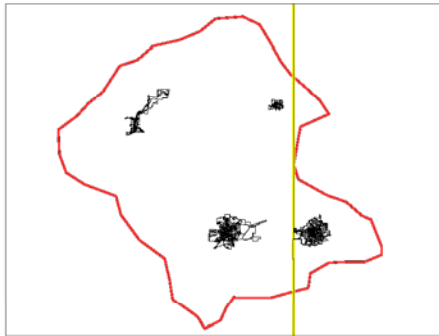
Base Service Charge per month, per meter

	Inside Seattle	Outside Seattle	Shoreline & Lk. Forest Park*
3/4" and less	\$13.00	\$14.80	\$15.80

Average Water User

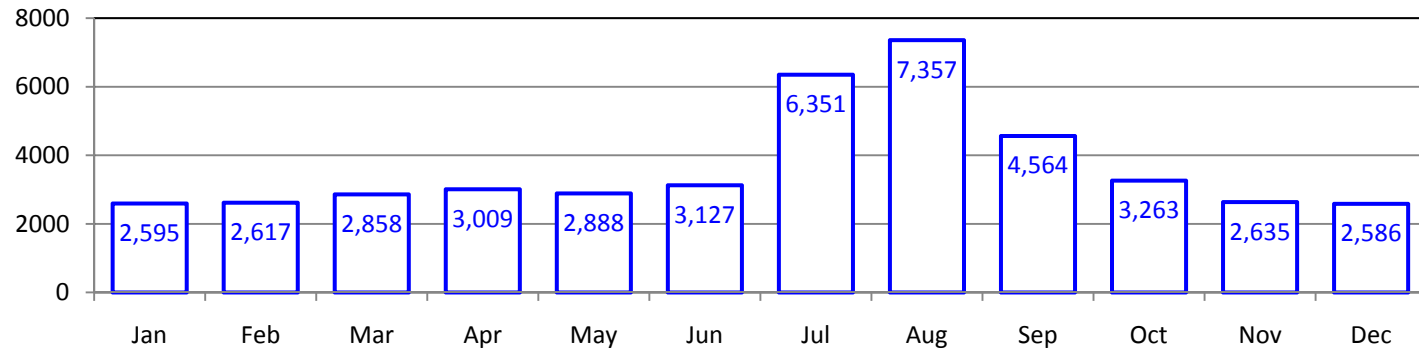


2010 Water Use by Month (MG)												
	Jan	Feb	Mar	Apr	May	Jun	Jul	Aug	Sep	Oct	Nov	Dec
Pullman	50	49	51	55	57	60	119	139	92	65	47	50
Moscow	53	51	51	58	54	55	111	123	78	60	49	49
WSU	23	28	34	33	26	34	65	83	48	32	28	26
UI	9	10	14	12	9	9	24	25	17	13	14	9
Colfax	11	10	11	11	16	17	36	40	22	14	11	12
Palouse	3	2	3	3	3	4	11	11	5	3	3	3
Total	149	150	164	173	166	179	365	422	262	187	151	148

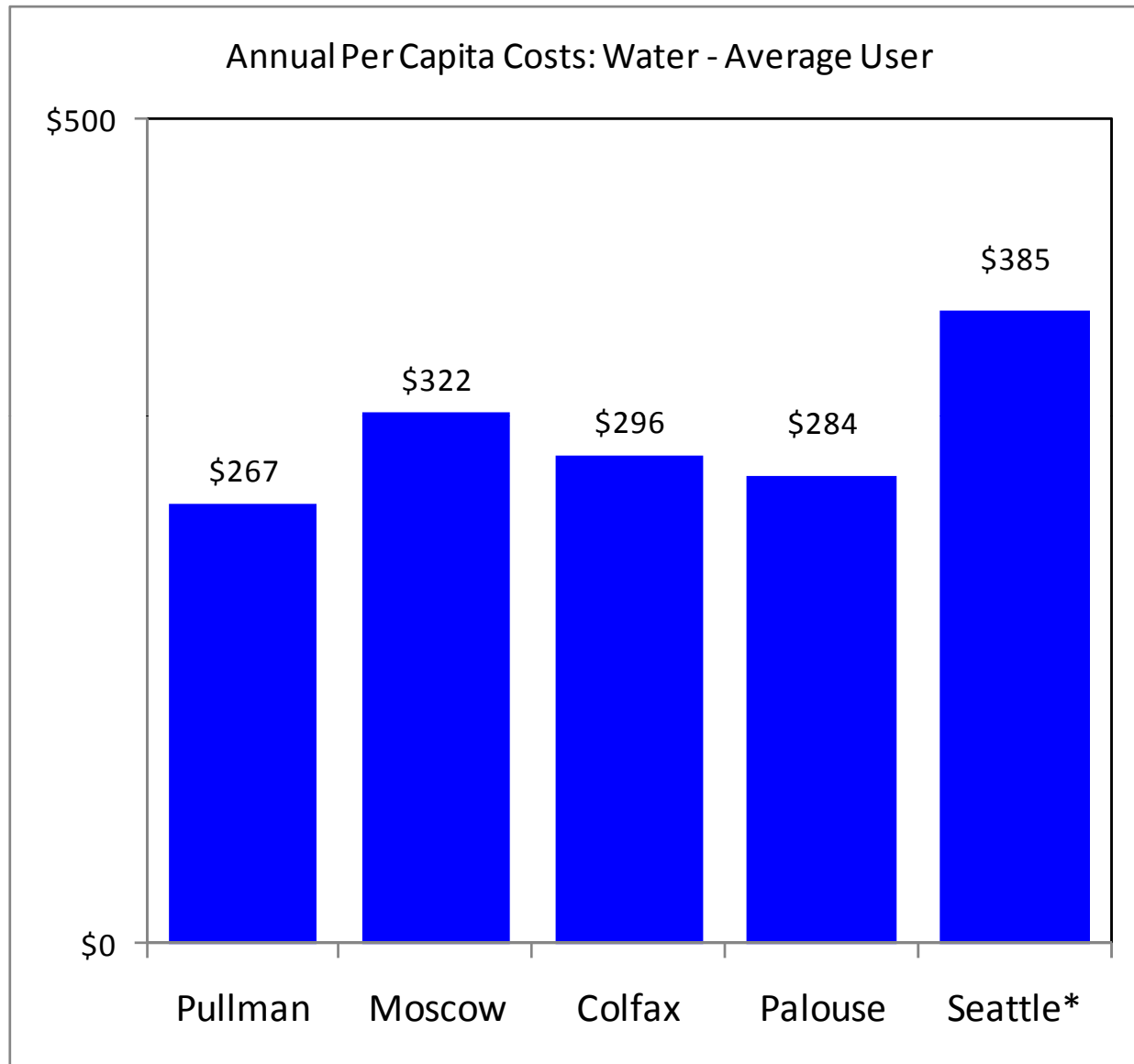


Basin	2010 Population				
	Total	Within Cities	% Inside	Outside Cities	% Outside
Basin	63,835	57,402	90%	6,433	10%
Latah w/in Basin	26,250	23,800	91%	2,450	9%
Whitman w/in Basin	37,585	33,602	89%	3,983	11%

2010 Average Per Capita Use (Gallons/Month)



Average User Annual Water Costs



Pullman Sewer Rates

RESOLUTION NO. R-55 -09

A RESOLUTION ADOPTING A FEE SCHEDULE FOR THE SEWER RATES AND CHARGES CHAPTER OF THE "PUBLIC SERVICES AND UTILITIES" CODE PURSUANT TO THE PROVISIONS OF CHAPTER 10.20 OF THE PULLMAN CITY CODE.

SEWER USER FEE SCHEDULE

1. MONTHLY USER FEE [P.C.C. 10.20.020(1)]

	Monthly Charge Effective As Of:				
	<u>11/1/2009</u>	<u>11/1/2010</u>	<u>11/1/2011</u>	<u>11/1/2012</u>	<u>11/1/2013</u>
(A) Single Family Dwelling Unit	\$ 23.80	\$ 26.80	\$ 30.15	\$ 33.00	\$ 38.15

Moscow Sewer Rates

CITY OF MOSCOW FEE SCHEDULE		
RESOLUTION NO. 2010-	EXHIBIT "A"	EFFECTIVE 10-1-2010
Monthly Sewer Service Rates		
A. Residential Service		
1. Single family and duplexes or other multiple units served by separate meters.		34.80

Colfax Sewer Rates



[Home](#)

Utility Billing

Water / Sewer Rates For 2011

Sewer	\$23.30	\$1.99 for each 100CF
--------------	---------	-----------------------

Palouse Sewer Rates

SPECIAL COUNCIL MEETING -DRAFT ONLY **December 14, 2010**

OLD BUSINESS:

Water & Sewer Committee 2011 Water rate recommendations:

SEWER: Sewer rates have been raised three times since 2003 for a total of \$5.00. We are currently operating sewer at a loss. The average monthly rate across the state of WA is \$41.93, ours is \$21.00. W/S committee is proposing a **base sewer rate of \$24.00**. If we don't increase sewer, our reserve balance will be gone. A \$3.00 increase will likely not increase the ending balance by much; it simply allows us to meet anticipated expenses and to break even. Councilmember Floyd asked if we need to increase it more to build reserves? Yes, we do but it was the opinion of the w/s committee not to try to do it all in one year. The w/s committee recommends smaller, more frequent incremental increases in the future.

Councilmember Wekenman **MOVED** to raise sewer by \$3.00, raise water by \$5.50 and raise overage by \$.25 per 100 cf, effective Feb. 1, 2011. Councilmember Snook seconded. Councilmember Newman publicly thanked Andy O'Neill of RCAC for his hours he put into this incredibly complicated study. The committee put a great deal of thought into what was fair and to solve our immediate problems. Clerk Beeson clarified that bills will still include the usual \$1.00 SCI for infrastructure and the \$5.00 for sewer reserve for debt payments. Motion carried unanimously.

Seattle Sewer Rates

Departments | Services | Staff Directory | My.Seattle.Gov

 Seattle.gov This Department

Seattle Public Utilities

Reliable water, sewer, drainage & solid-waste services Ray Hoffman, Director

[Services](#) | [About SPU](#) | [Engineering](#) | [Site Index](#)

[Billing](#) | [Garbage](#) | [Recycling](#) | [Yard](#) | [Water](#) | [Drainage & Sewer](#)

[Home](#) | [Contact Us](#)



[Services](#) > [Drainage & Sewer](#) > [Rates](#) > [Sewer Rates](#)

Sewer Rates

From 2010 to 2011, wastewater rates increased as follows:

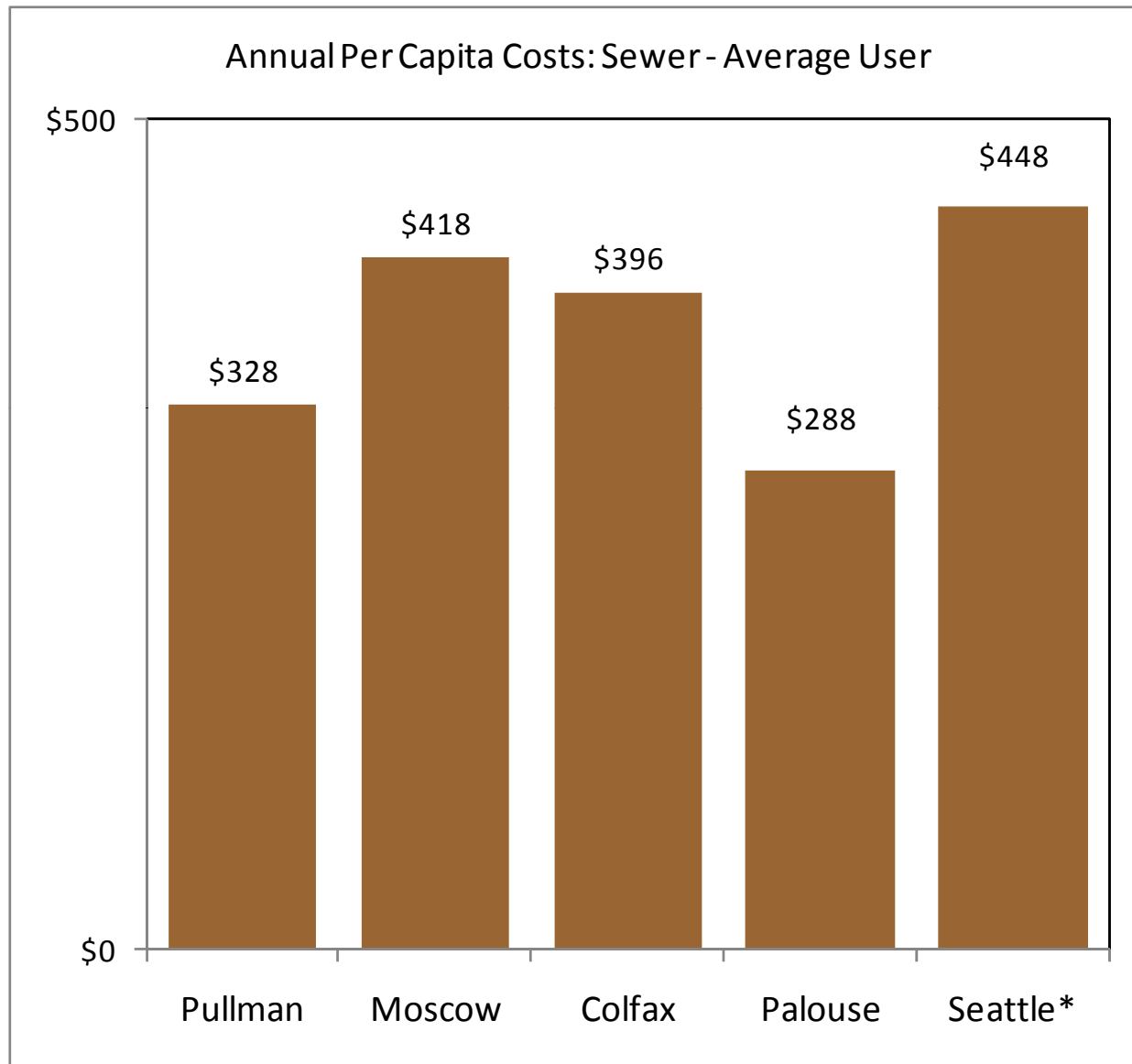
Residential & Commercial	2010	2011
Rate per CCF (100 cubic feet)	\$8.98	\$10.28
Typical Monthly Residential Bill	\$46.70	\$53.46

- 1 CCF equals 748 gallons.
- The typical single family residential customer generates 5.2 CCF of wastewater per month.
- Most residential customers are billed every two months.
- There is a one CCF minimum charge per premise per month.

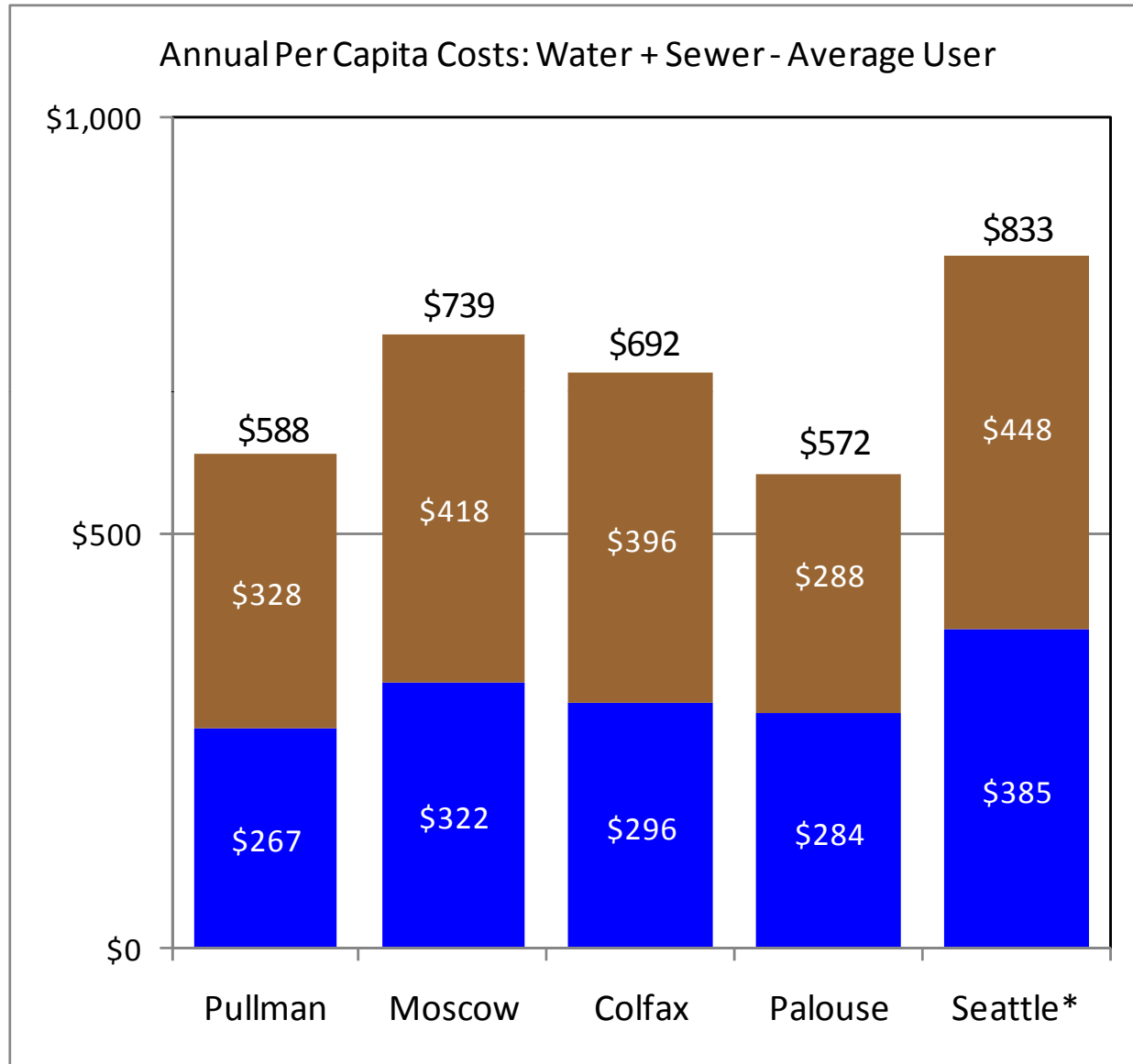
[Sewer Rates Home](#)

[Frequently Asked Questions](#)

Average User Annual Sewer Costs

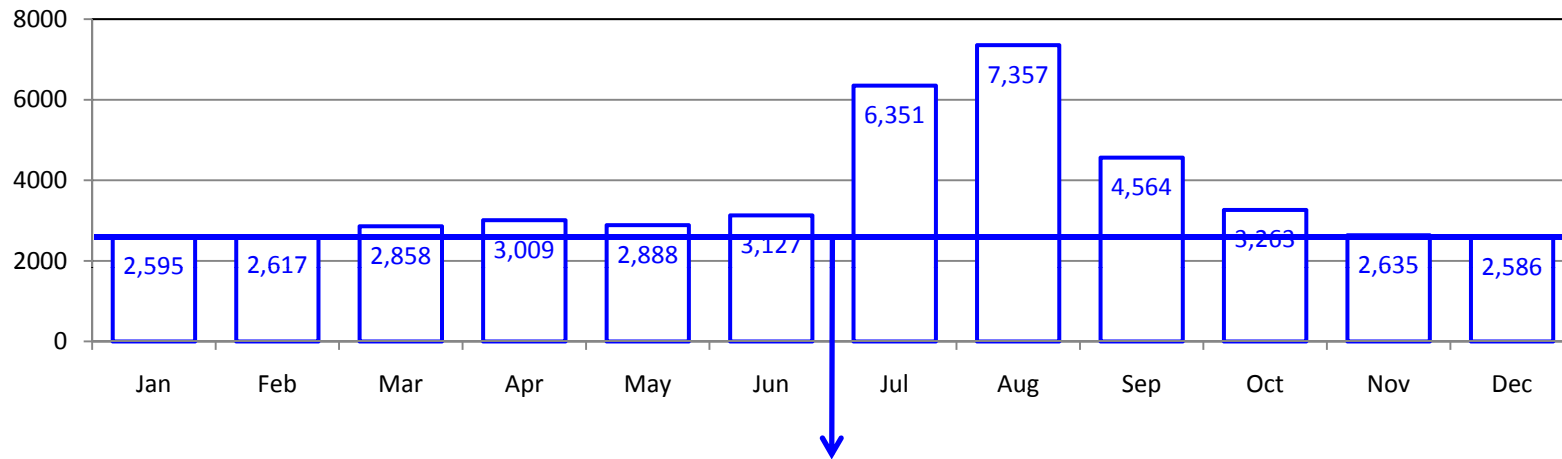


Average User Annual Combined (Water + Sewer) Costs



What Does “Average” User Mean?

2010 Average Per Capita Use (Gallons/Month)



Indoor Use (2613 GPCM, \approx 87 GPCD)

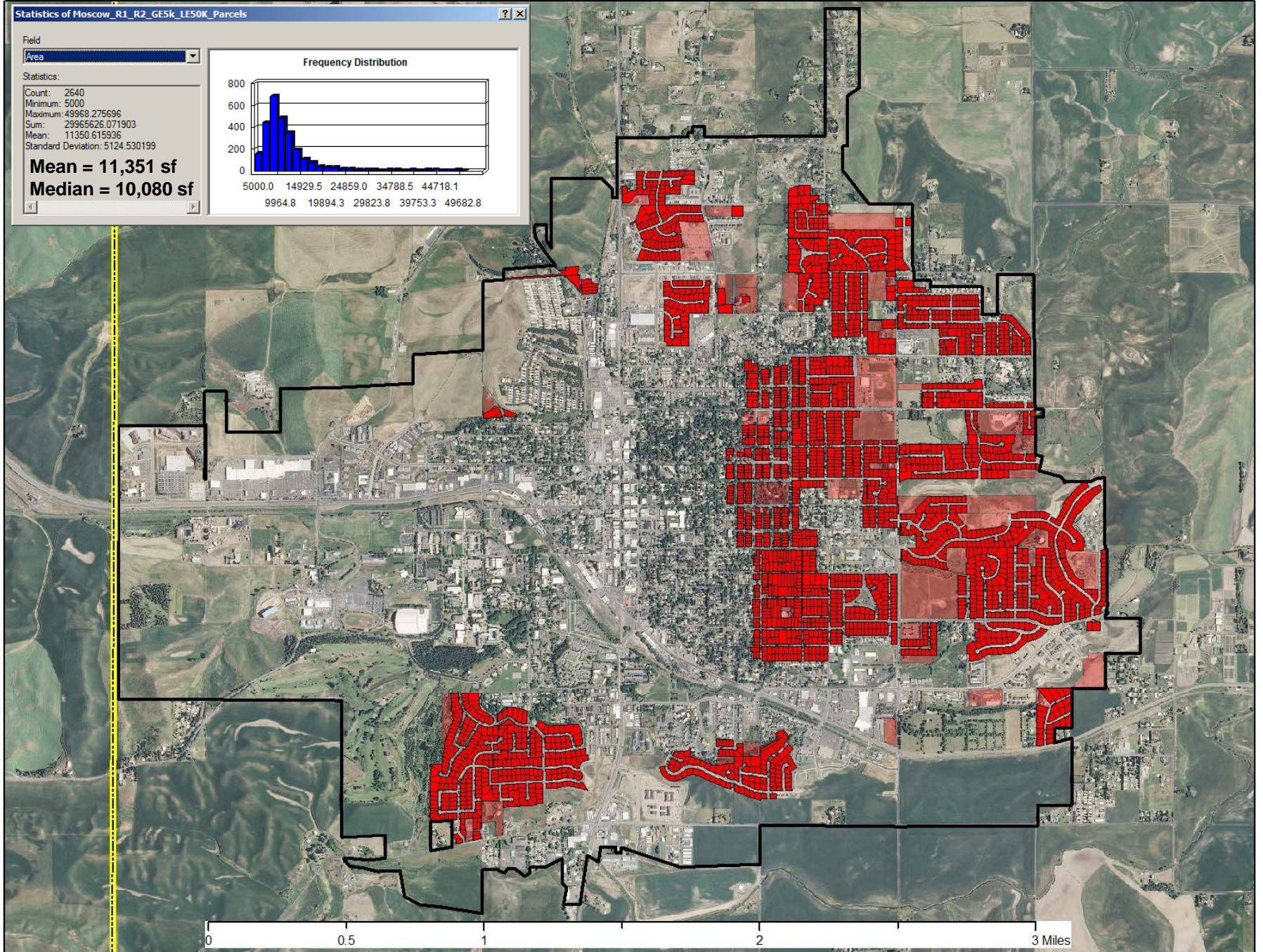
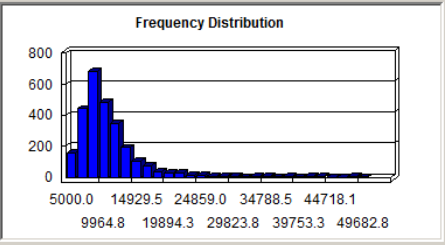
Statistics of Moscow_R1_R2_GE5k_LE50K_Parcels

Field: Area

Statistics:

- Count: 2640
- Minimum: 5000
- Maximum: 49968.275696
- Sum: 29965626.071903
- Mean: 11350.615936
- Standard Deviation: 5124.530199

Mean = 11,351 sf
Median = 10,080 sf



What Does “Average” Moscow PBAC User Mean?

Parcel Sizes of PBAC Associated Moscow Residents

8118	12052	13199	18564	20798
------	-------	-------	-------	-------

Average Parcel Size = 14,546 sf

8118	12052	13199	18564	20798
-----------------	-------	-------	-------	-------

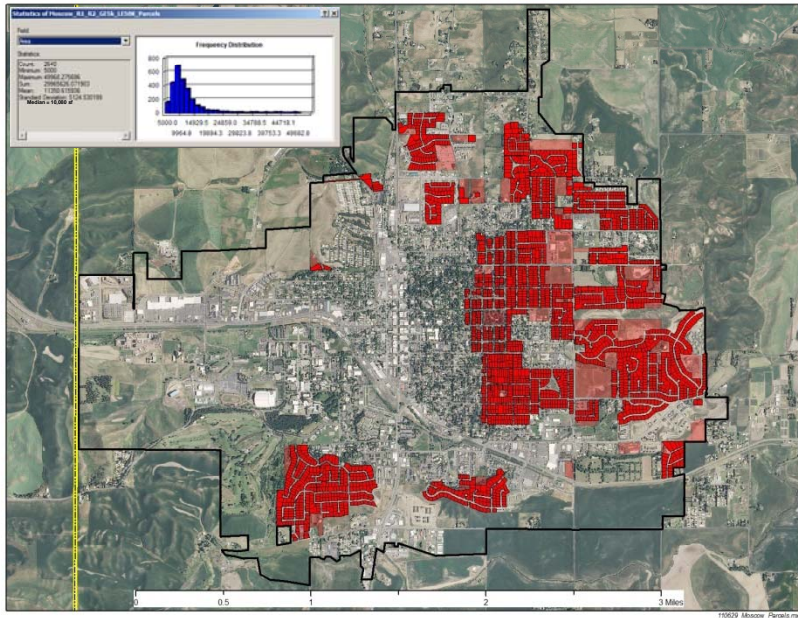
Average PBAC Member Parcel Size = 16,153 sf

Average Moscow Overall = 11,351 sf



“Average” Moscow PBAC Member Is Well Above Average!

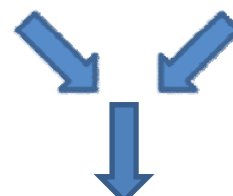
Irrigation Estimates



	Small	Medium	Large
Moscow Parcel Area (sqft)	5,000	11,351	50,000
Moscow Parcel Area (acre)	0.1148	0.2606	1.1478



	min	avg	max
Pullman Impervious Area (sqft)	1,257	3,574	11,824
Pullman Impervious Area (acre)	0.0289	0.0820	0.2714



	Small	Medium	Large
Estimated Pervious Area (sqft)	3,743	7,777	38,176
Estimated Pervious Area (acre)	0.0859	0.1785	0.8764

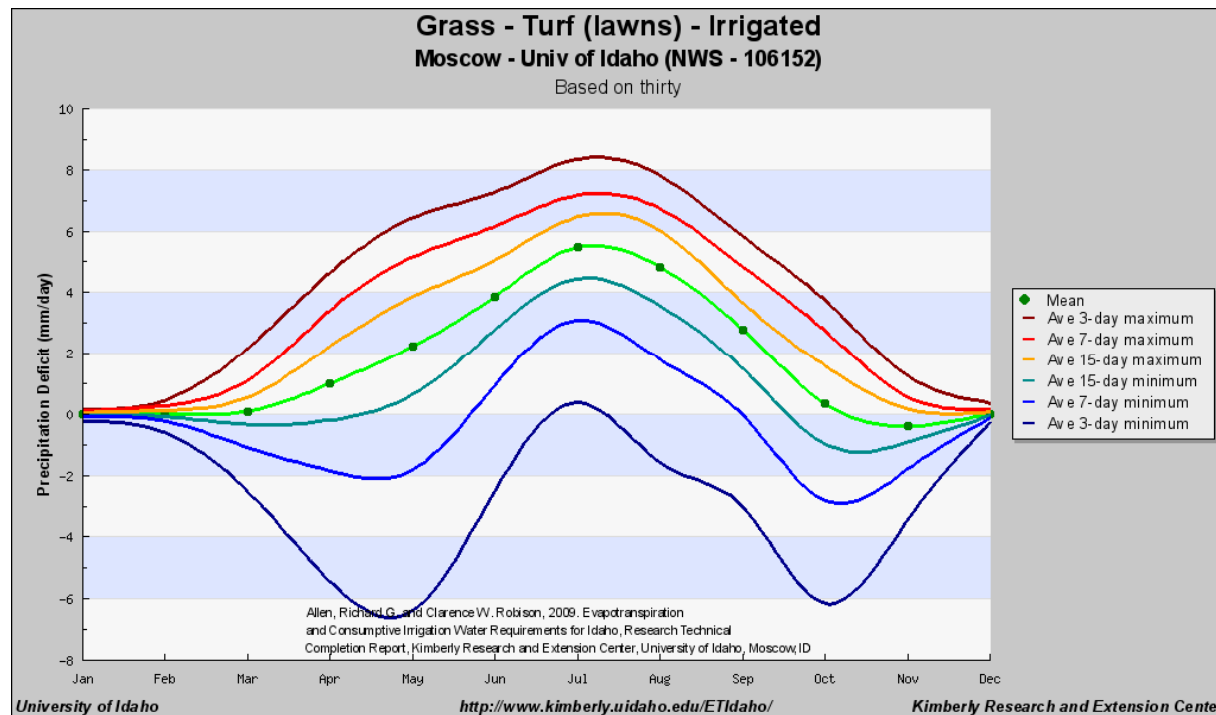
Precipitation Deficit

ET_{Idaho} 2009: Evapotranspiration and Consumptive Irrigation Water Requirements for Idaho

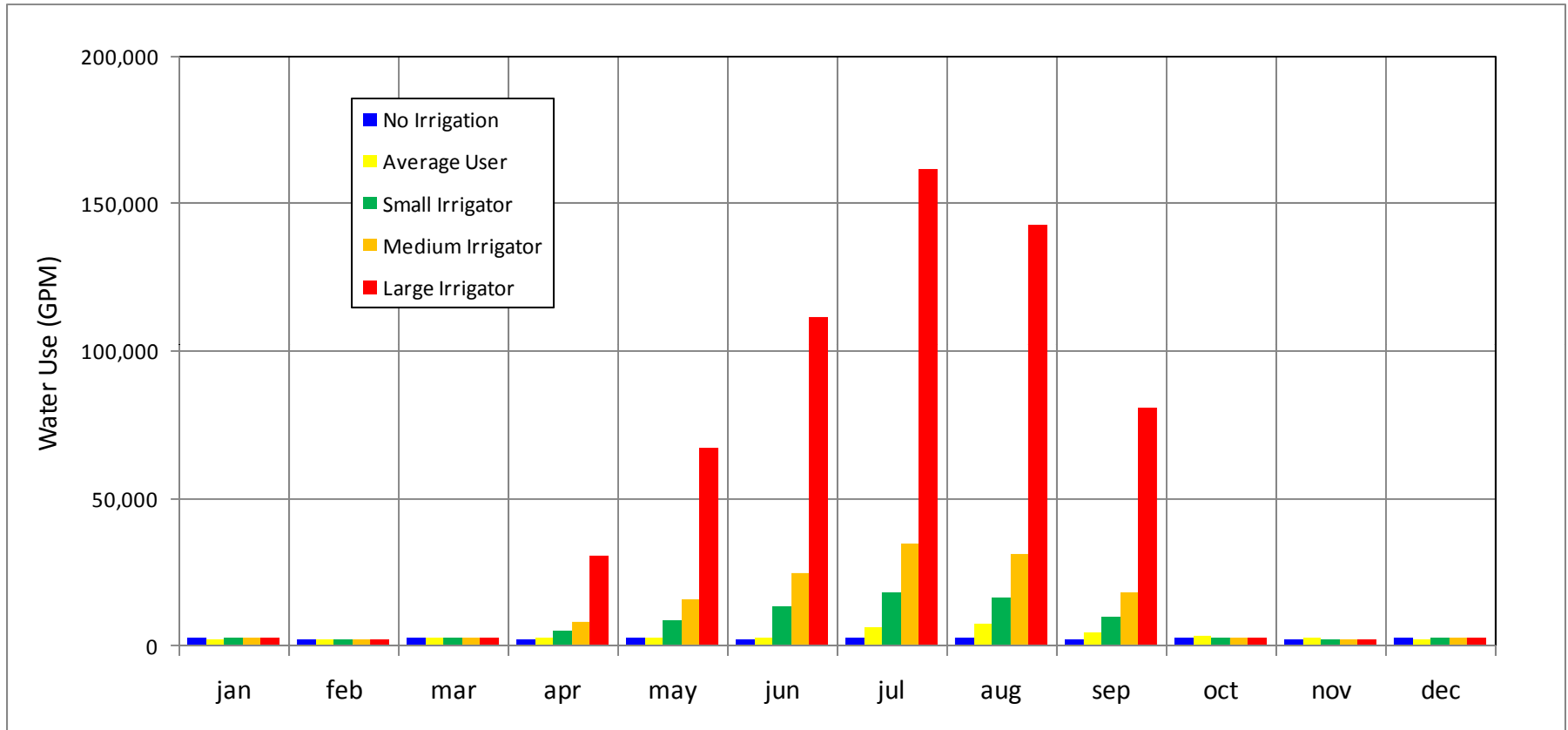
Please send suggestions for improving this site to robison at kimberly dot uidaho dot edu Copyright 2010, University of Idaho.

Moscow - Univ of Idaho (NWS --106152) for Grass - Turf (lawns) - Irrigated

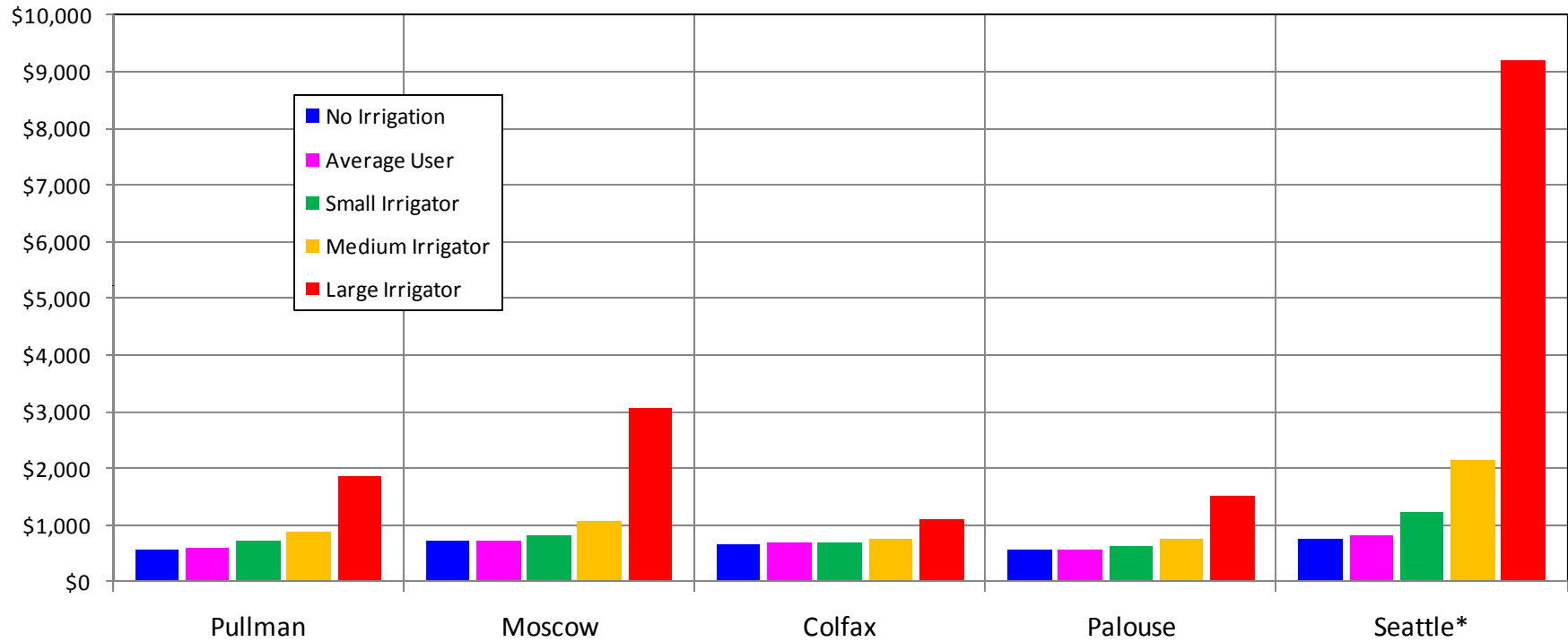
The **precipitation deficit** (P_{def}) is the difference between the potential ET (ET_{pot}) and the amount of precipitation infiltration and residing in the root zone. In essence, P_{def} is the amount of additional precipitation needed to fully support ET_{pot} . P_{def} was calculated as $ET_{pot} - P_{rz}$ where P_{rz} is the precipitation infiltrating into and residing in the root zone. P_{def} is synonymous with the *net irrigation water requirement* when occurring during the growing season for an irrigated crop. P_{def} represents the amount of additional water that the crop would evaporate or transpire beyond P_{rz} if that water were made available at the right time during the growing season. Because the ET_{pot} estimate only includes soil evaporation for known precipitation and irrigation events, any additions of P_{def} outside of the simulated growing season would tend to increase ET_{pot} and thus P_{def} to some extent, causing a type of positive feedback process. The precipitation deficit is generally the most appropriate "ET" parameter to use for irrigation system design.



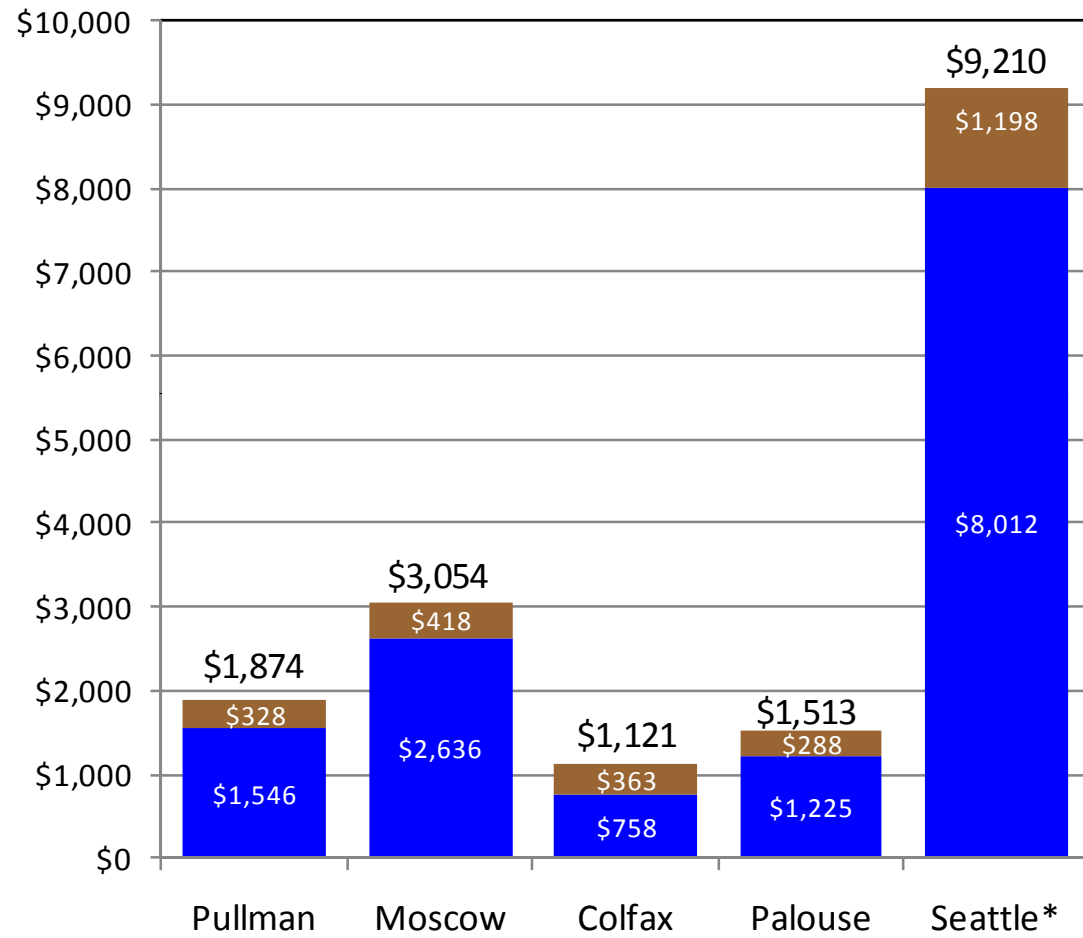
Monthly Water Use



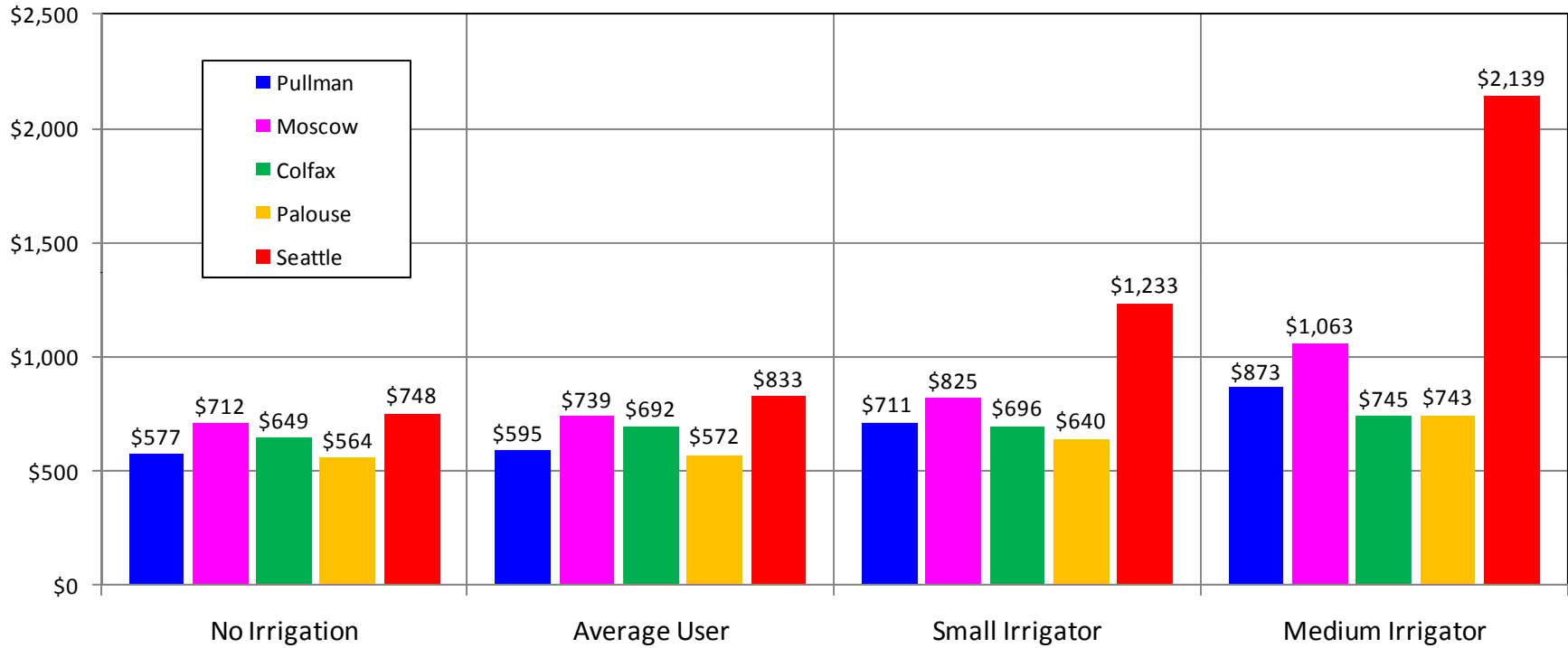
Annual Per Capita Costs: Water + Sewer

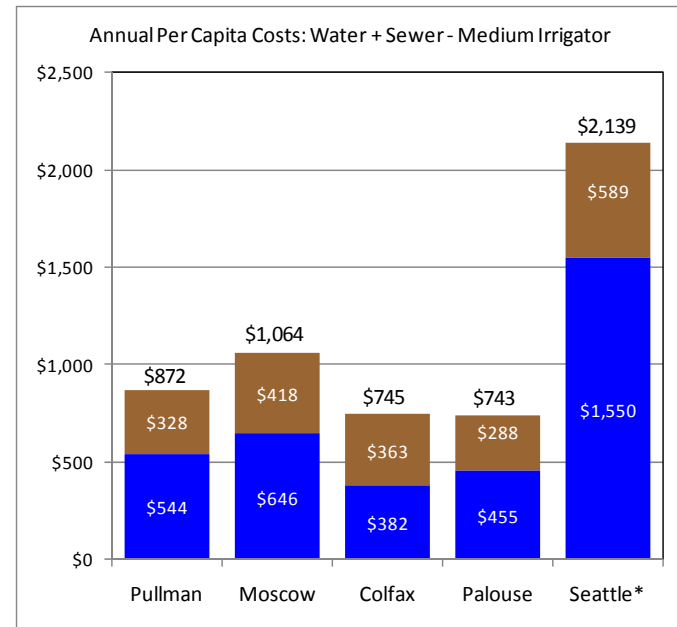
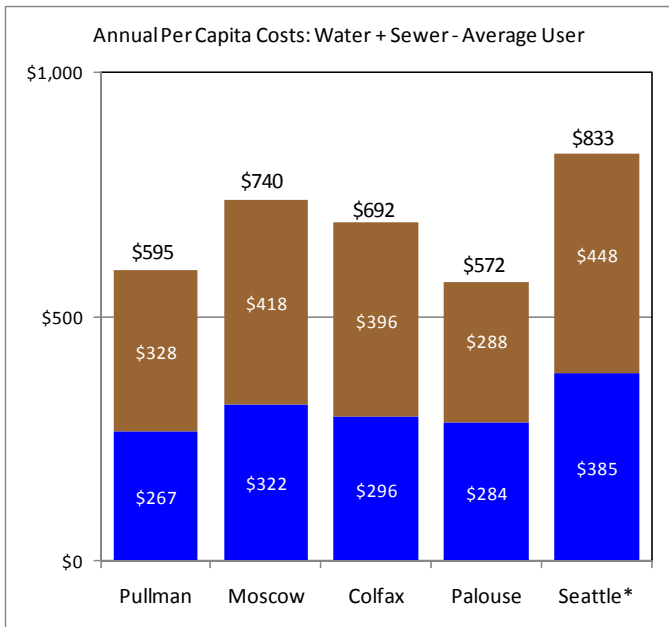
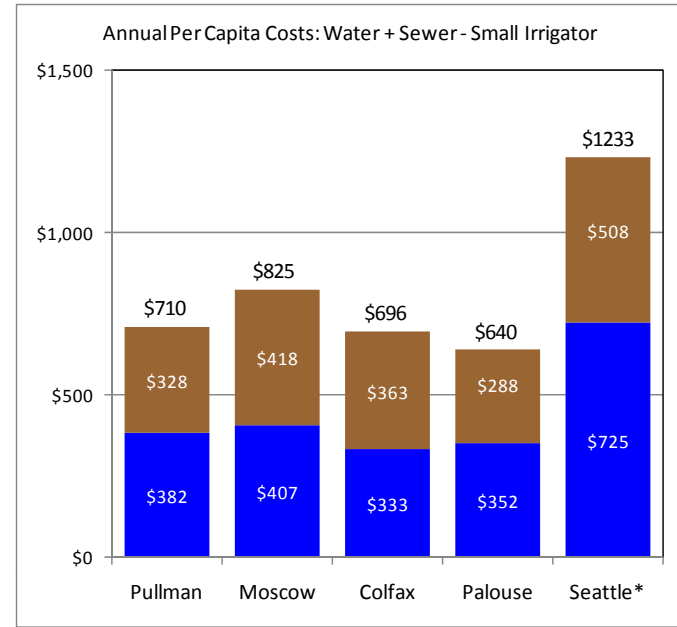
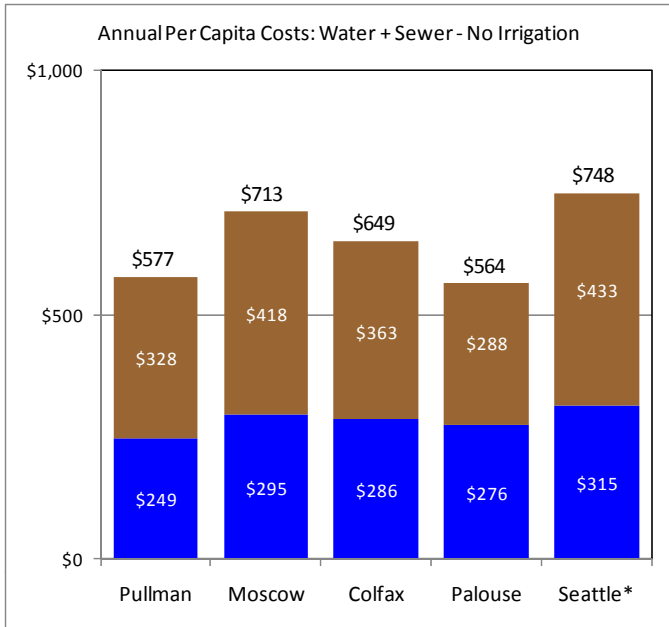


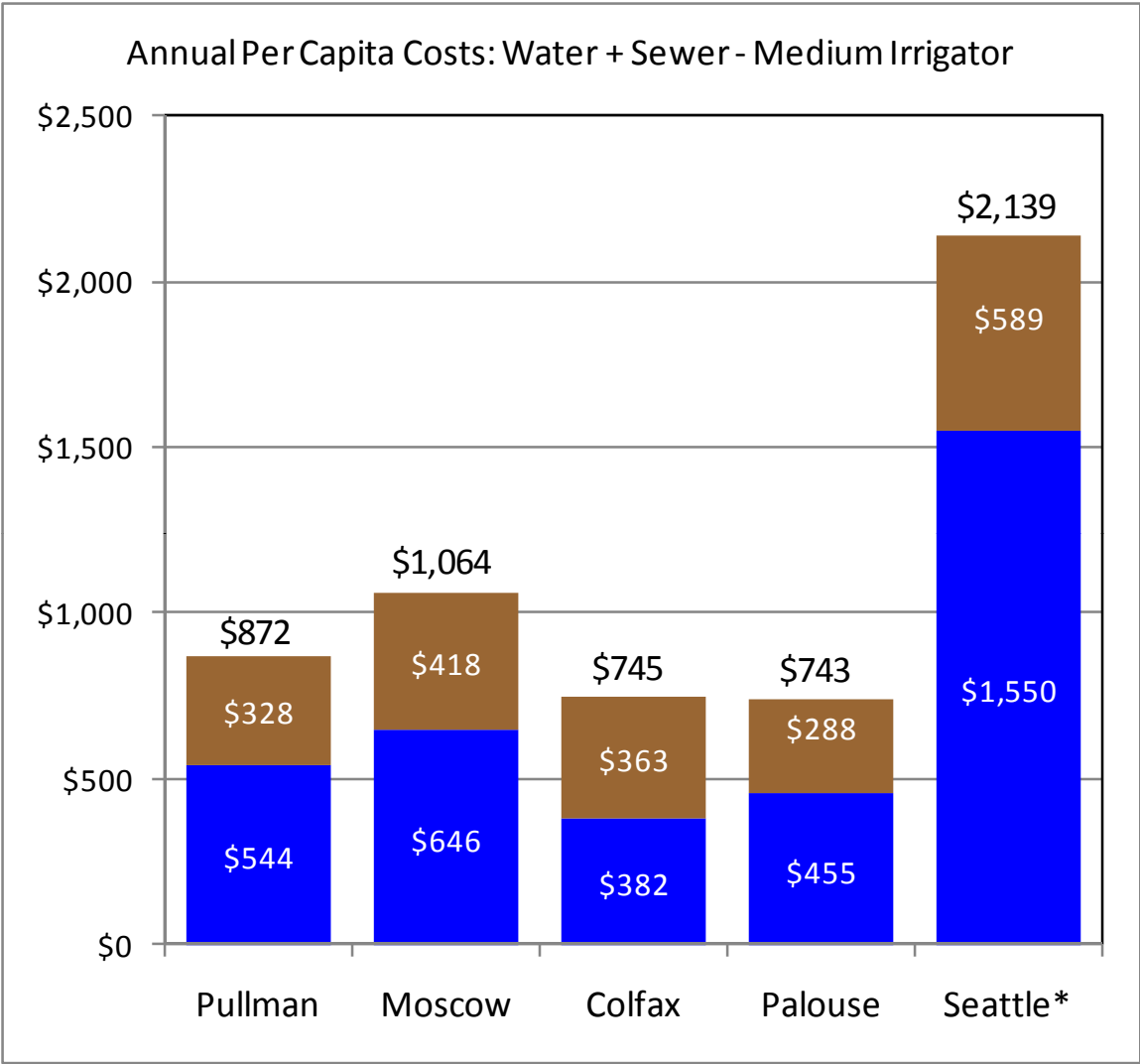
Annual Per Capita Costs: Water + Sewer - Large Irrigator



Annual Per Capita Costs: Water + Sewer







Which City Has the Best Rates?

Cheapest Place to Live

Harlingen, Texas

Water Base Rate \$7.93 (includes 3,000 gallons)

- Commodity Rate \$1.28 / ccf

Sewer Base Rate \$2.18 (includes 3000 gallons)

- Commodity Rate \$2.82 / ccf

Poverty Rate 30.4%

Weather at a Glance

Weather Station	Elevation	Station Select			
Treasure Hills, Harlingen	39 ft				
Now	Temperature	Wind(mph)	Sunrise / Set	Moon	
Scattered Clouds	95.0 °F Feels Like 101 °F	4.5	6:44 AM 8:26 PM	First Quarter More Astronomy	
Today	Tonight	Tomorrow	Sunday	Monday	Tuesday
95 °F Partly Cloudy	74 °F Partly Cloudy	94 °F Partly Cloudy	94 76 °F Chance of T-storms 20% chance of precipitation	95 77 °F Chance of T-storms 20% chance of precipitation	97 76 °F Partly Cloudy

Cost of Living - 2011

ADVERTISEMENT

Advertorials By **SmarterLifestyles™**

The cost of living factors drive the cost of doing business. From housing to food and energy, wages are

Overall	State	Cost of Business	Workforce	Quality of Life	Economy	Infrastructure & Transp.	Technology & Innovation	Education	Business Friendliness	Access to Capital	Cost of Living
35	Kentucky	4	22	46	36	16	36	32	36	34	1
18(t)	Tennessee	19	9	47	46	5	24	43	8	26	2
28	Oklahoma	6	22	37	4	35	37	42	24	24	3
33	Arkansas	1	10	45	9	40	44	31	44	35	4
2	Texas	33	14	32	14	1	4	27	18	4	5
10	Nebraska	17	17	12		31	35	20	5	35	6
11	Alabama	16	16	49	39		33	4	29	35	11
31	Idaho	11	5	16	38	36	39	45	22	35	12
23	Ohio	5	50	42	24	1	15	13	42	21	13
21	Arizona	10		35	4	1	18	49	13		16
20	Washington	43	26	13	32	18	5	14	31	8	37
27	Oregon		38	20	48	10	20	37	26	19	36
36	New York	40	49		20	14	2	1	36	3	38
30	New Jersey	43	32	16	42	23	8	2	41	6	46
39	Connecticut	45	33	11	44	43	19	3	40	17	47
32	California	47	29	22	30	7	1	36	50	1	48
49	Alaska	49	48	21	3	47	43	41	34	35	49
48	Hawaii	50	47	1	16	46	42	40	43	33	50

Quality of Life - 2011

ADVERTISEMENT

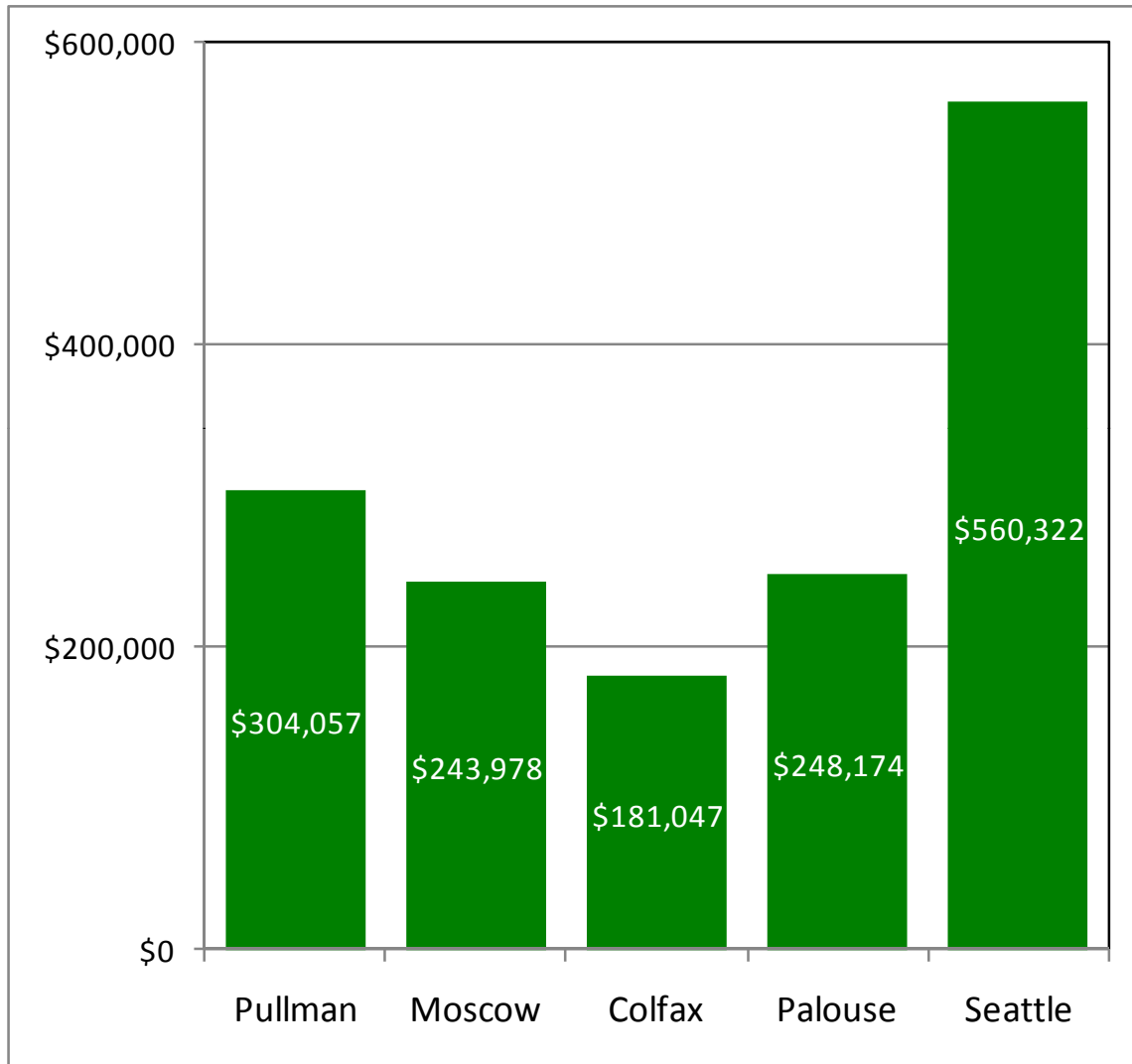
Advertorials By **SmarterLifestyles™**

The best places to do business are also the best places to live. We scored the states on several factors.

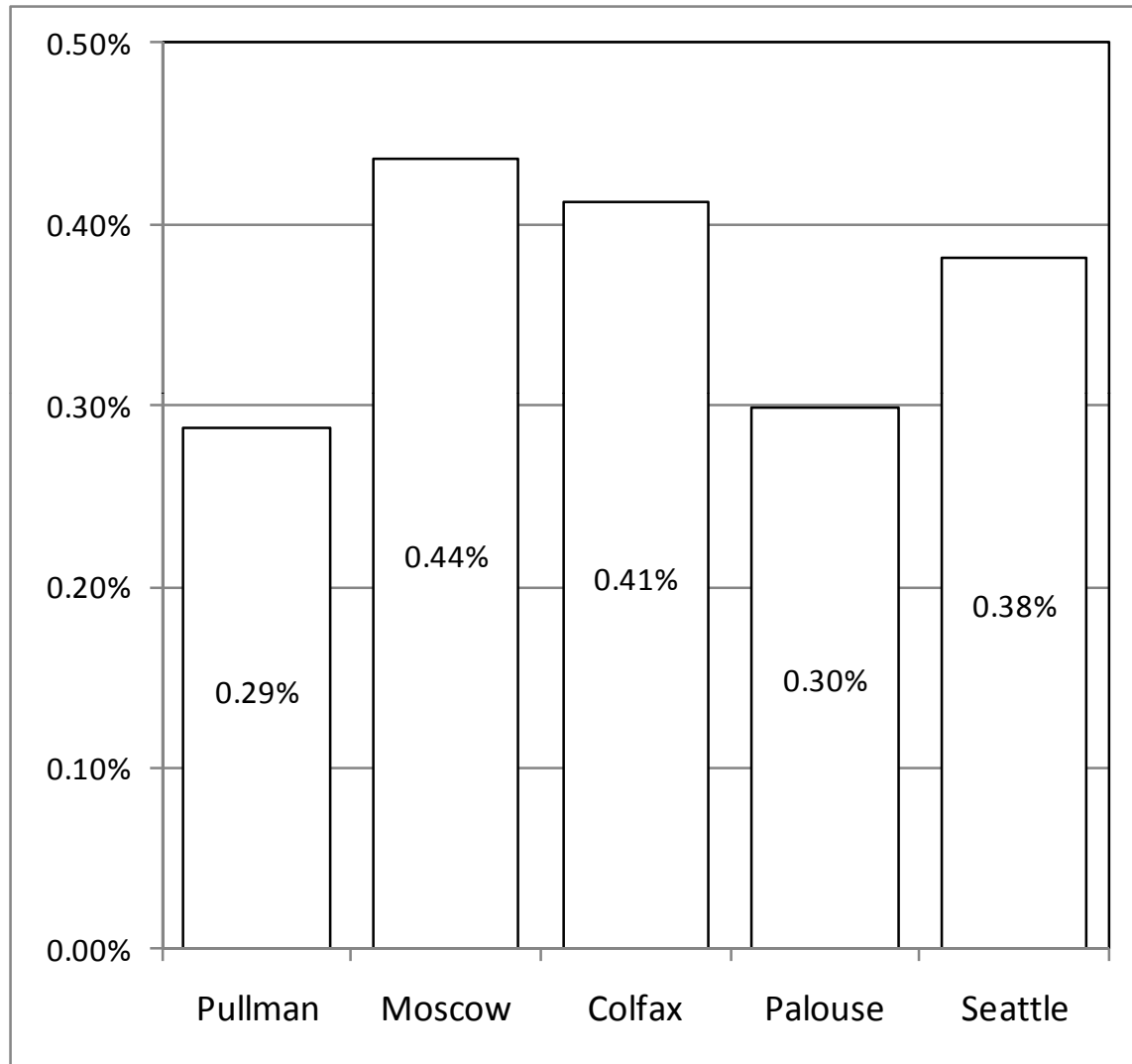


Overall	State	Cost of Business	Workforce	Quality of Life	Economy	Infrastructure & Transp.	Technology & Innovation	Education	Business Friendliness	Access to Capital	Cost of Living
48	Hawaii	50	47	1	16	45	42	40	43	33	50
17	New Hampshire	37	40	2	10	45	29	7	6	20	40
44	Vermont	42	37	3	21	49	40	4	34	32	42
21	Wyoming	34	11	4	2	33	50	18	21	35	27
13(t)	South Dakota	7	15	5	11	42	49	20	3	35	26
40	Maine	36	44	6	34	43	40	20	32	30	30
10	Montana	25	27	7	5	41	30	20	3	30	6
20	Washington	43	26	13	32	13	5	14	31	8	37
8	Utah	12	8	14	1	3	25	4	4	22	17
5	New Jersey	40	32	15	1	3	6	2	4	0	40
31	Idaho	11	5	16	38	35	39	45	22	35	12
9	Iowa	1	21	18	5	20	20	15	11	22	1
1	Kansas	1	10	45	3	40	20	31	44	35	4
35	Kentucky	4	22	46	36	15	36	32	36	34	1
18(t)	Tennessee	19	9	47	46	5	24	43	8	26	2
36	Delaware	31	19	48	22	40	32	26	1	35	35
41	Alabama	16	16	49	39	24	33	44	29	35	11
42	Louisiana	22	25	50	28	25	34	33	26	35	21

2009 Average Detached Home Price



Annual Water Costs as a Percentage of 2009 Average Home Price



Palouse Basin Water Rate Comparisons
PBAC Meeting
July 21, 2011