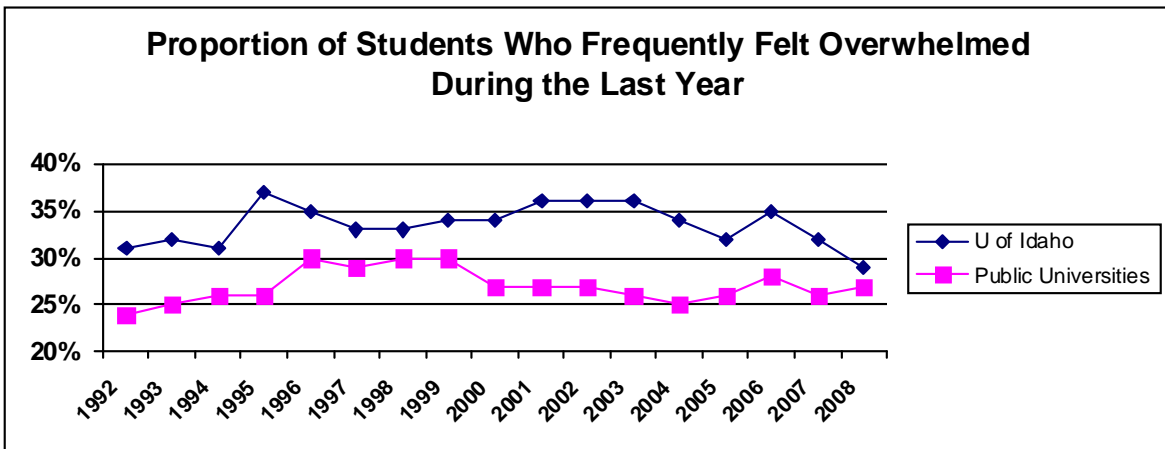
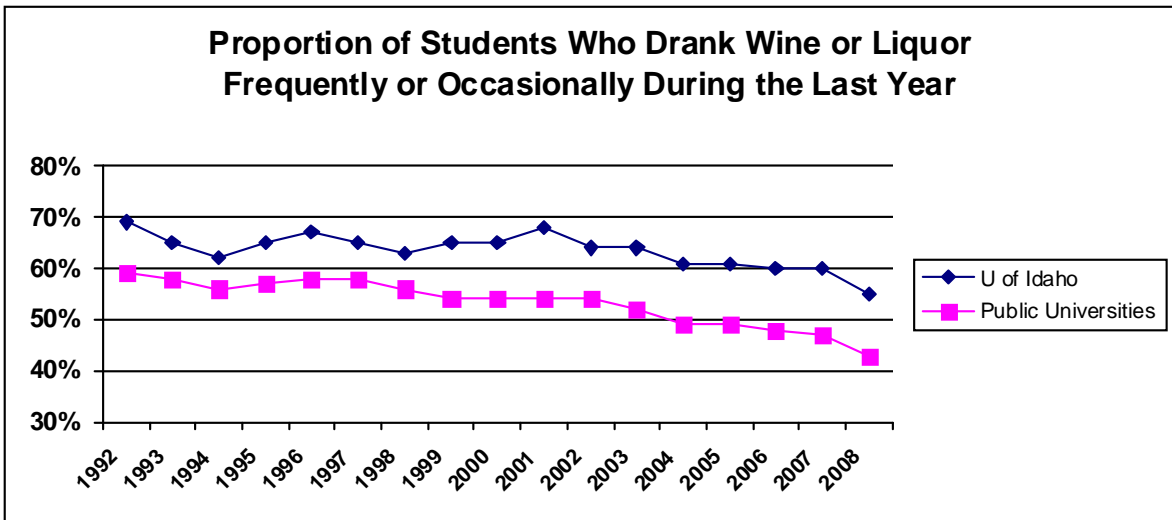
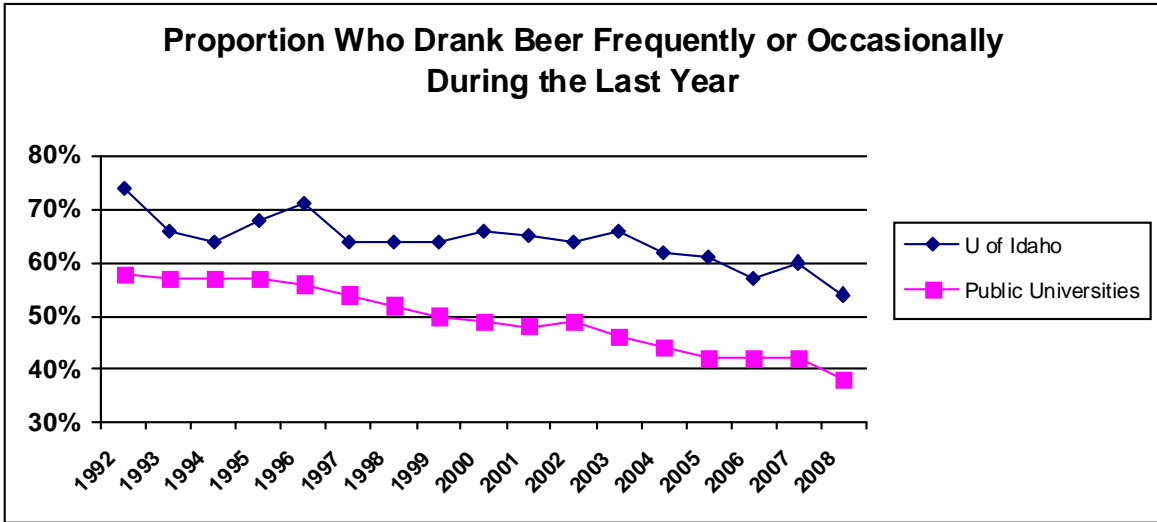
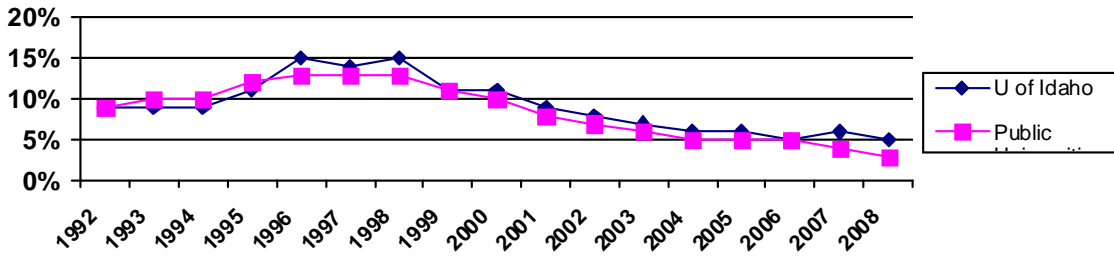


# CIRP FRESHMAN SURVEY 1992-2008\*

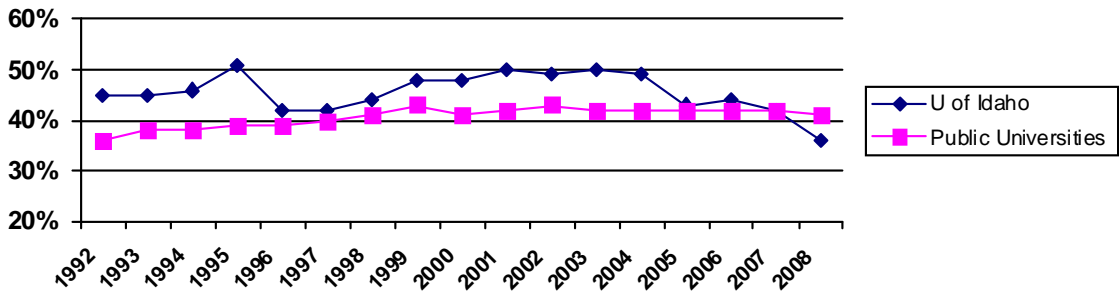
## ACTIVITIES DURING THE LAST YEAR



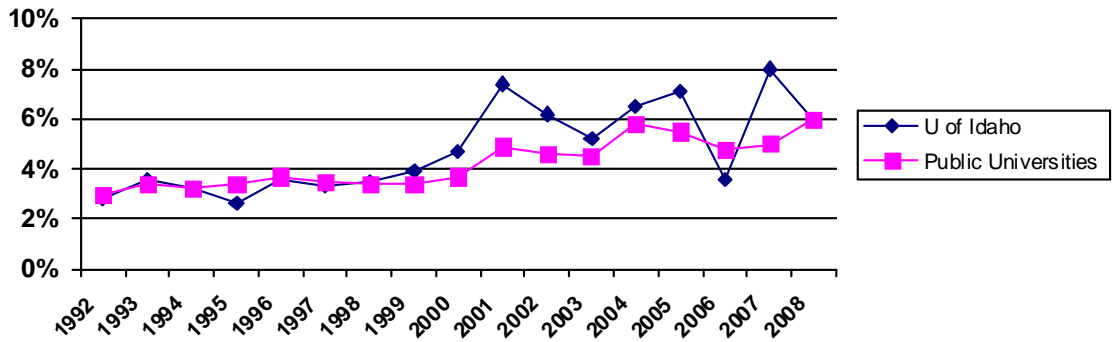
**Proportion of Student Who Smoked Frequently During the Last Year**



**Proportion of Students Who Frequently Felt Bored in Class During the Last Year**

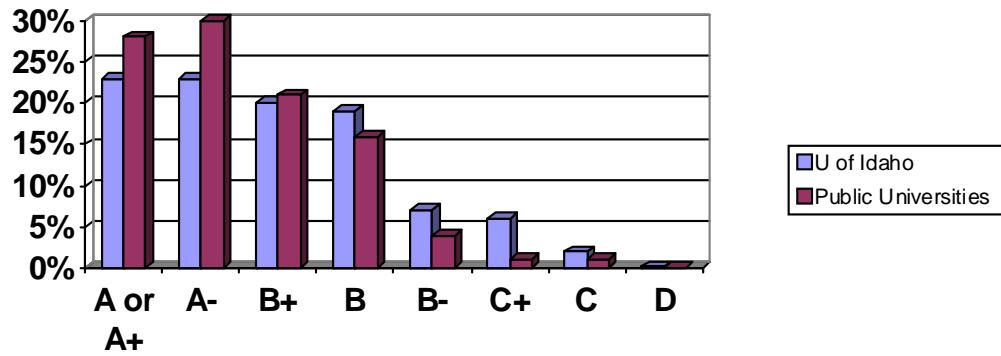


**Proportion of Students Estimating the Chances are Very Good He/She Will Work Full-Time While Attending College**

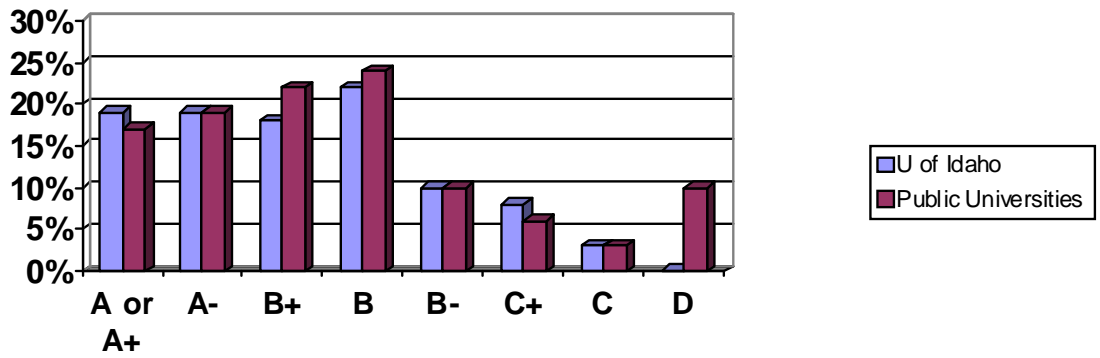


# ACADEMIC ENGAGEMENT

## Average Grade In High School 2008

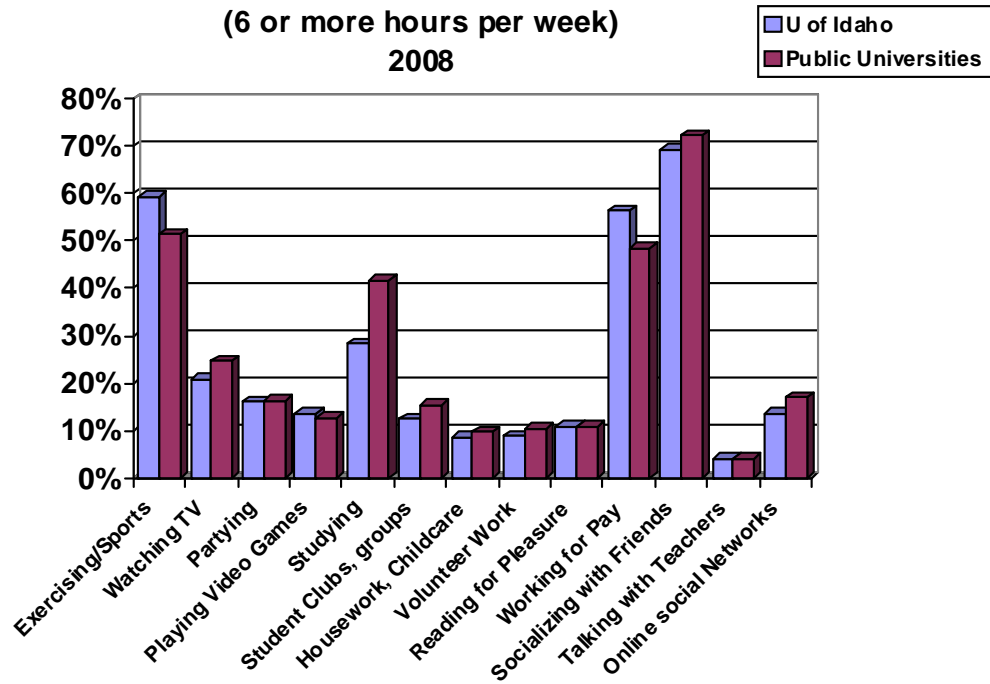


## Average Grade in High School 1992

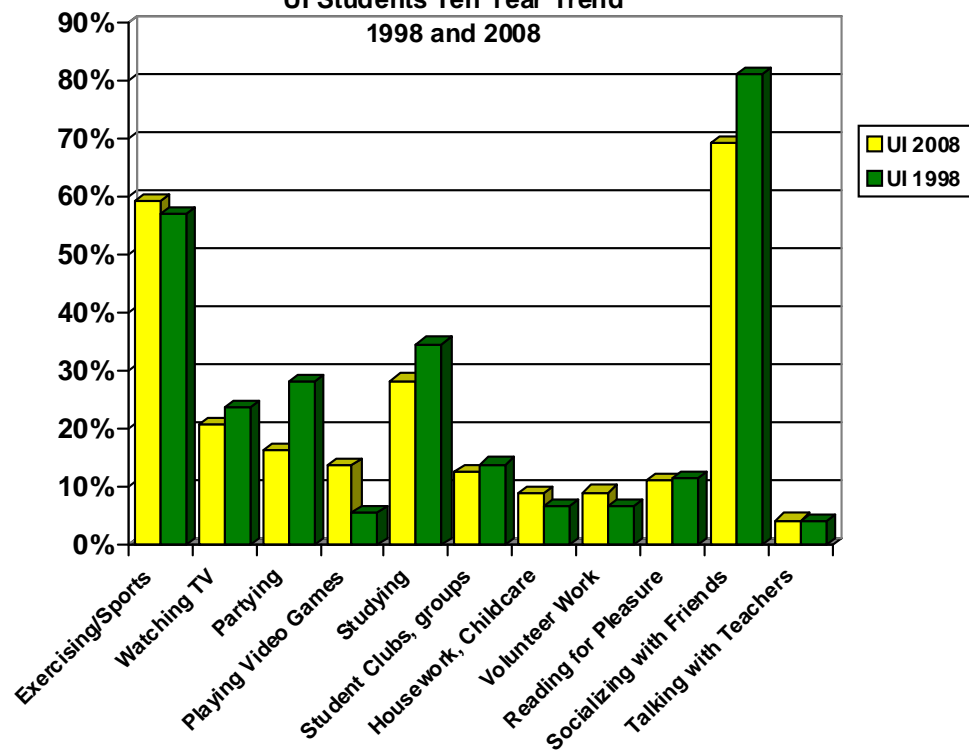


# ACTIVITIES

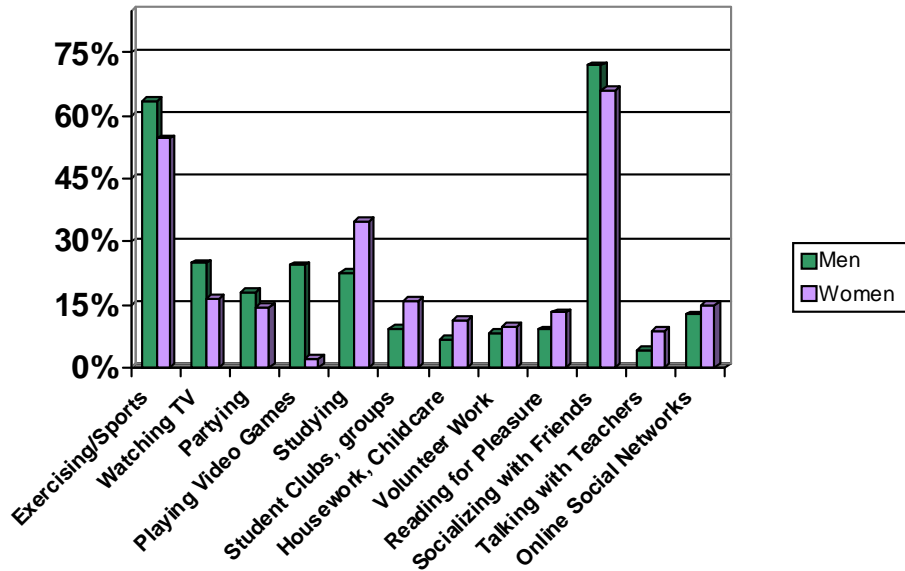
**Activities During Senior Year of High School  
(6 or more hours per week)  
2008**



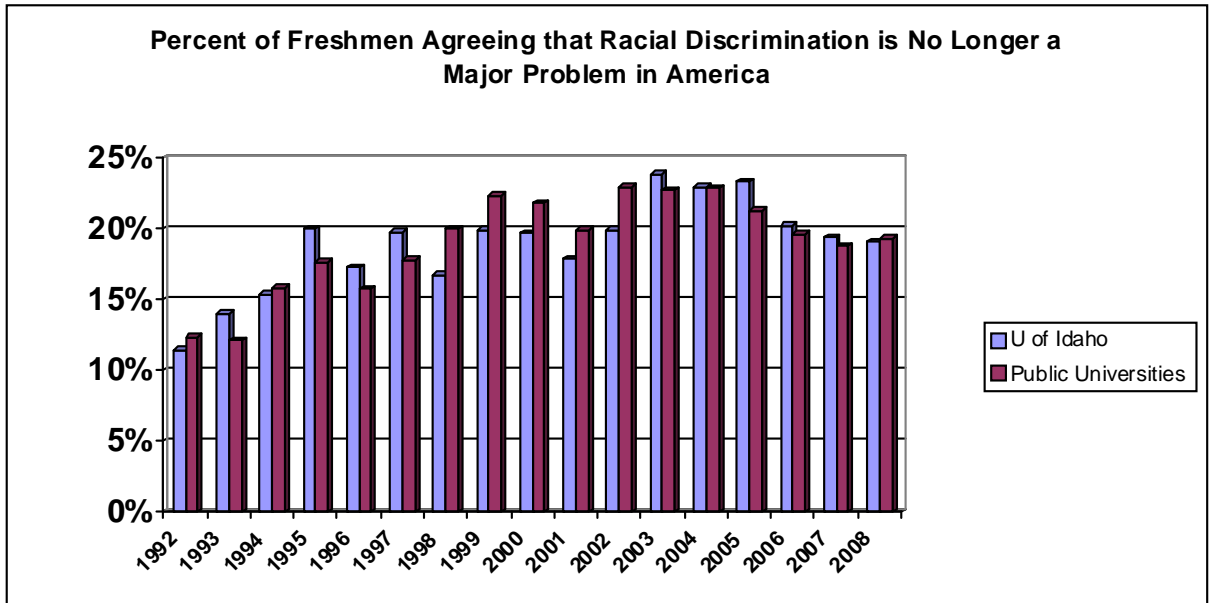
**Activities During Senior Year of High School  
(6 or more hours per week)  
UI Students Ten Year Trend  
1998 and 2008**

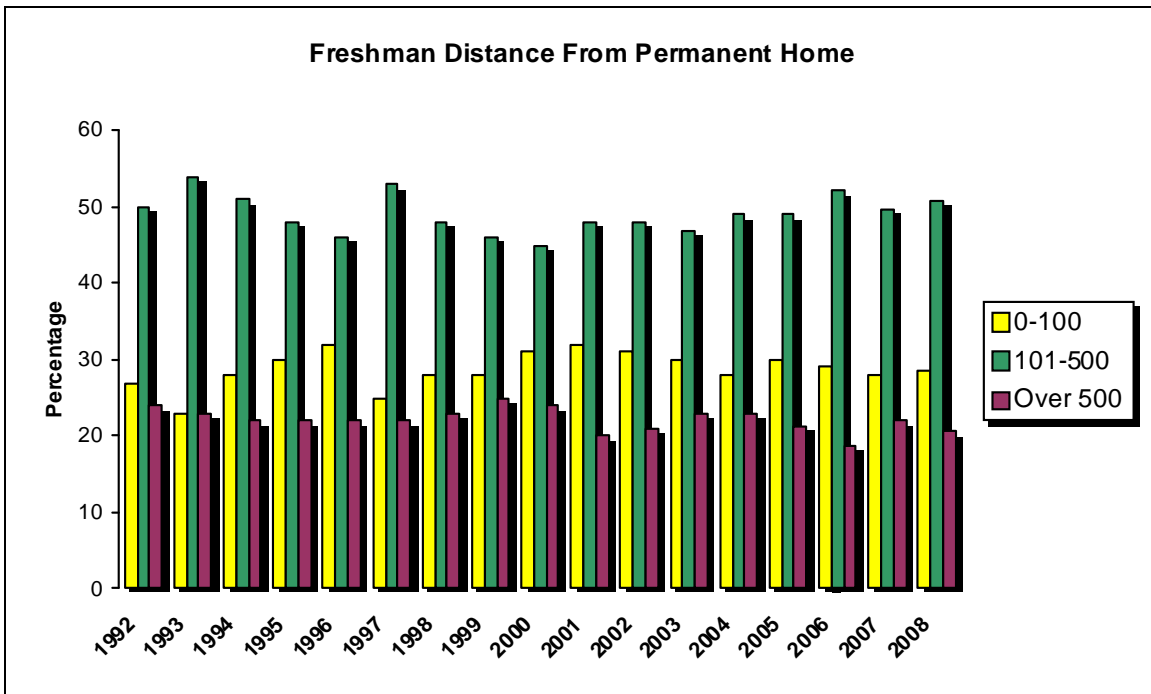
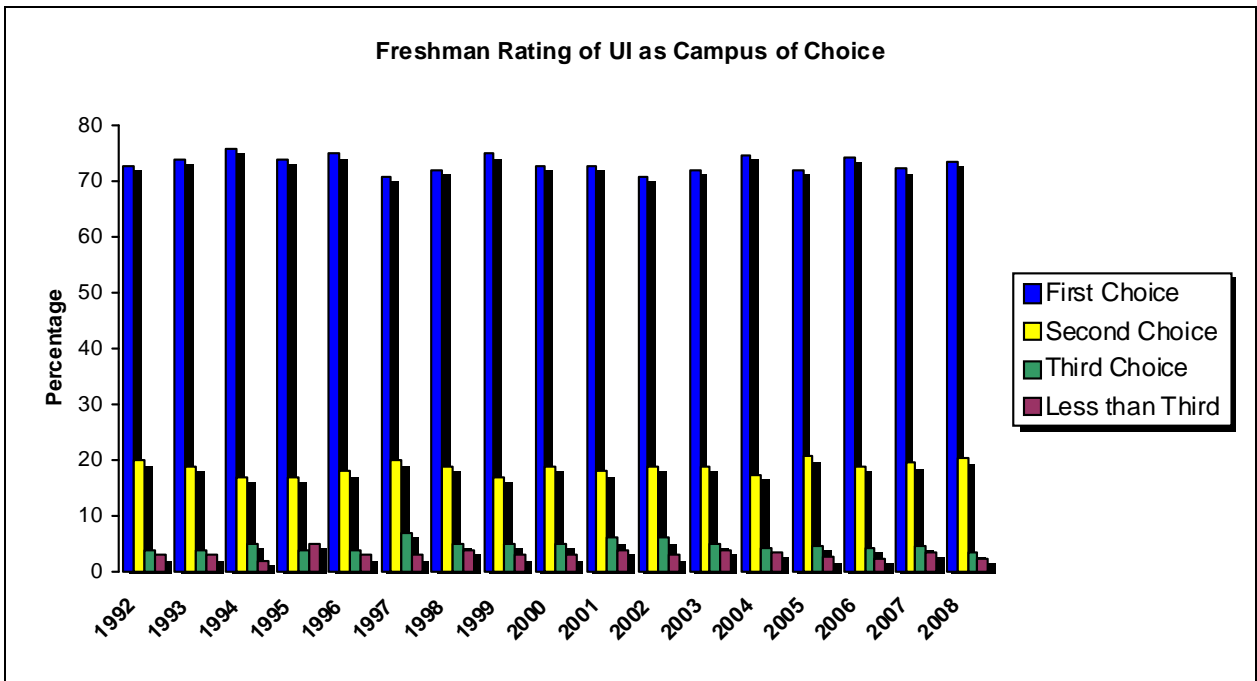


**UI Men's and Women's Activities During Senior Year of High School  
(6 or more hours per week)  
2008**



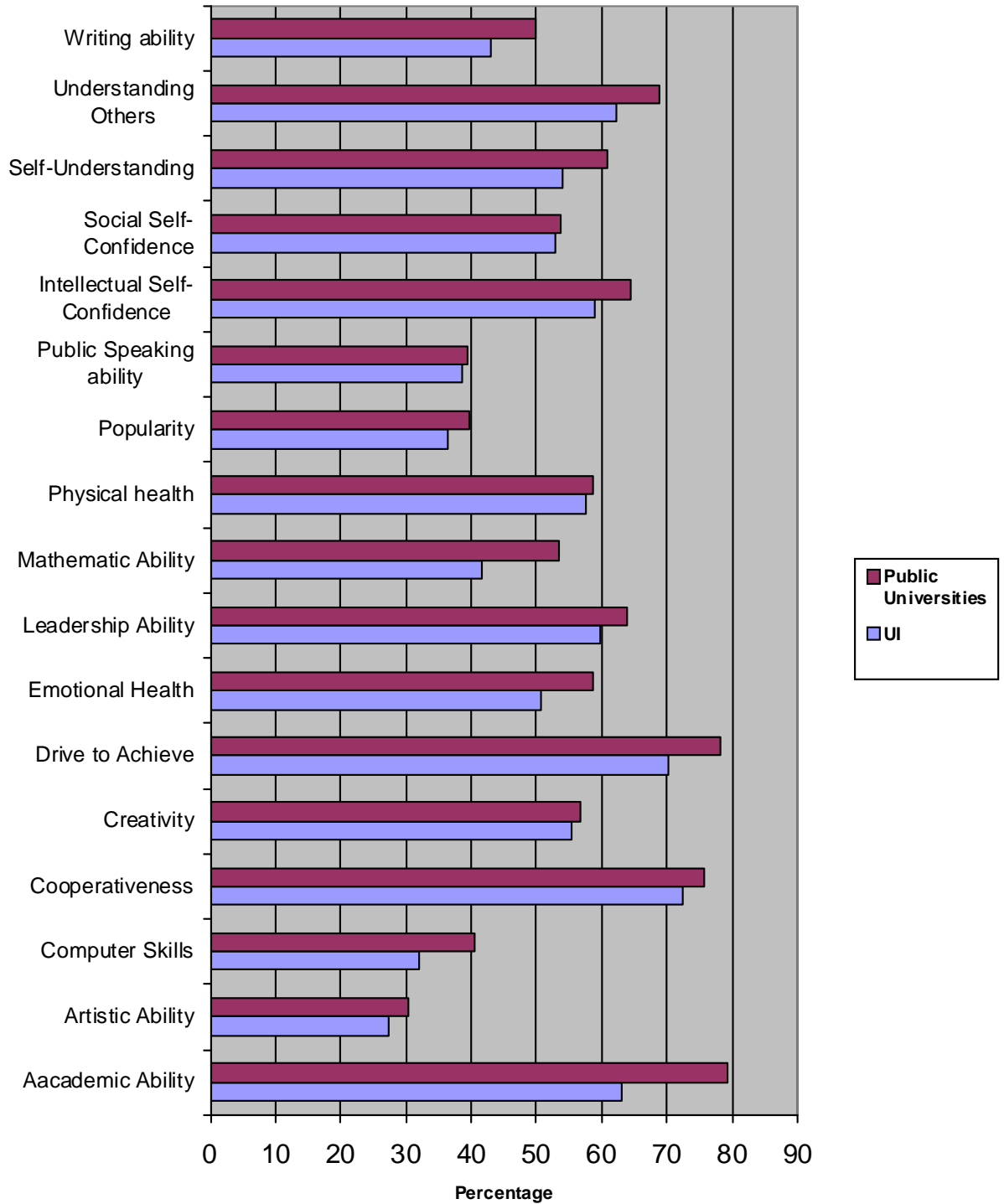
**SOCIAL ACTIVISM**





\*Due to a change in the administration procedure for the year, 1997 data should be interpreted with caution.

**Freshman Academic Self-Confidence  
Rating Self Above Average or In Highest 10%  
2008**



**Freshman Academic Self-Confidence**  
**Rating Self Above Average or In Highest 10%**  
**UI Students 1998 to 2008**  
**10-Year History**

