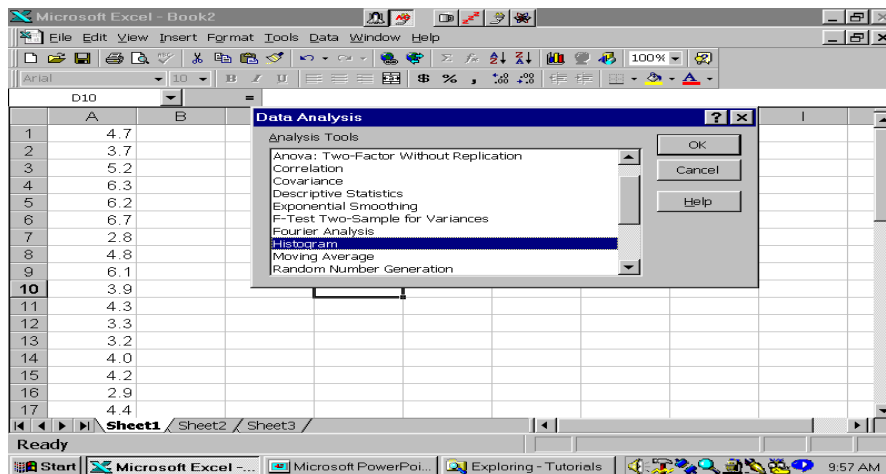


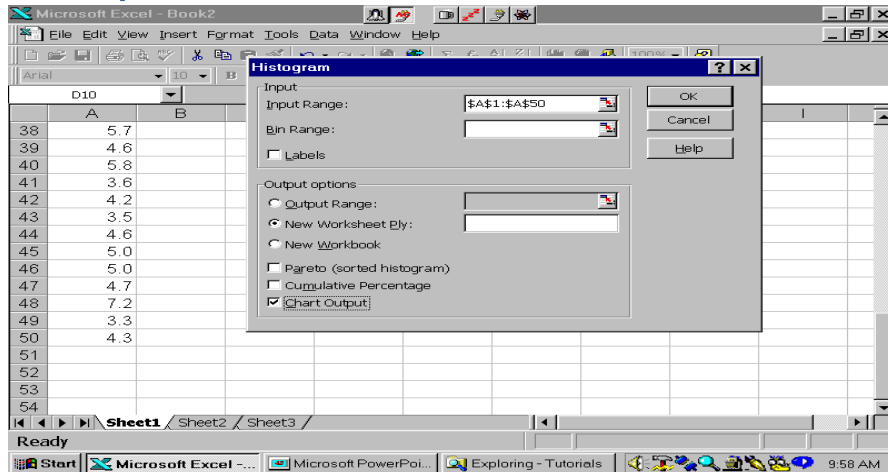
Excel Tutorials

How to Create a Histogram

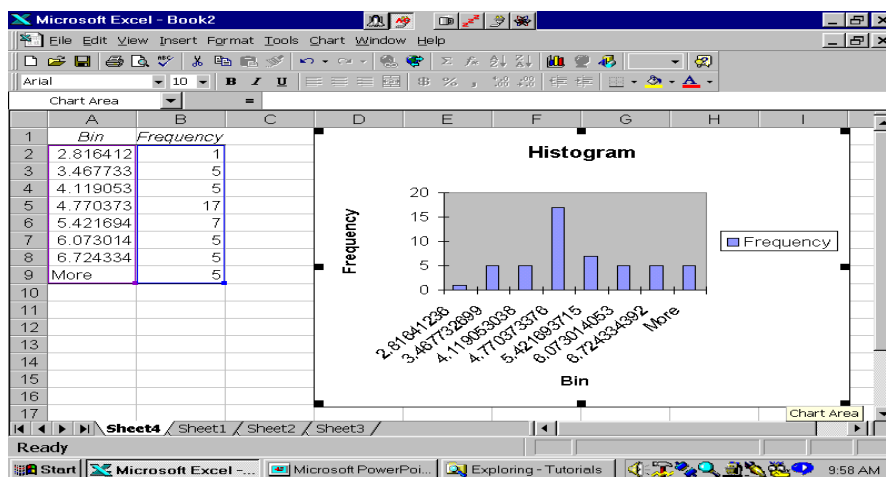
Click Data
Analysis/Histogram



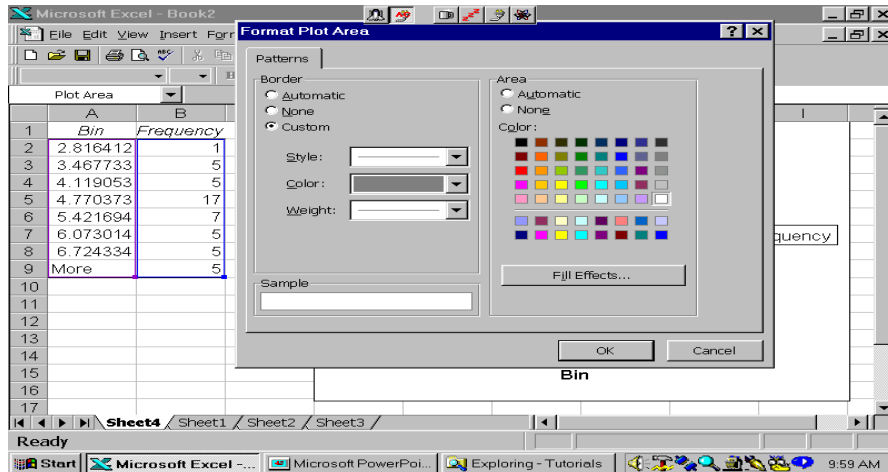
Enter Data Range and Click Desired Output Options



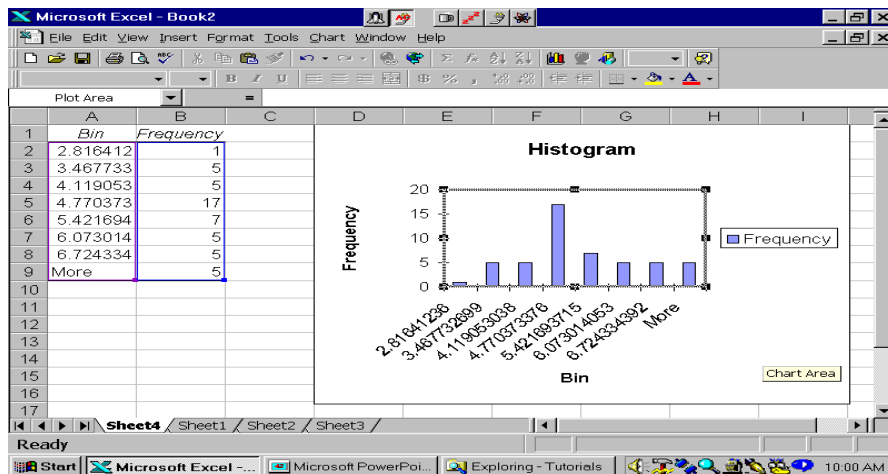
Here's the Initial Output



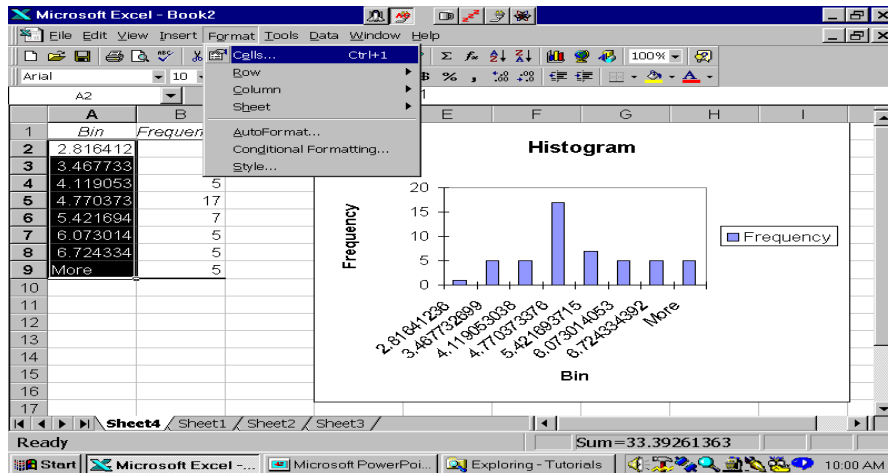
To Remove Shading, Double Click Chart Areas and Highlight White in Area



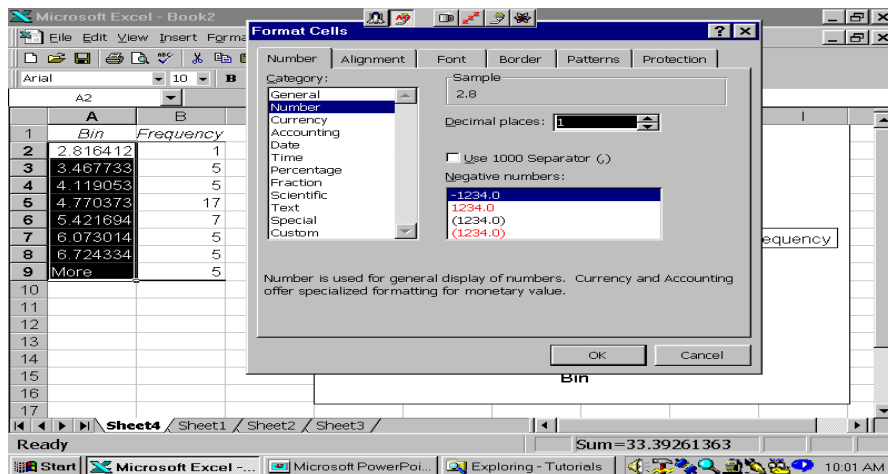
Here's the Chart with a White Background



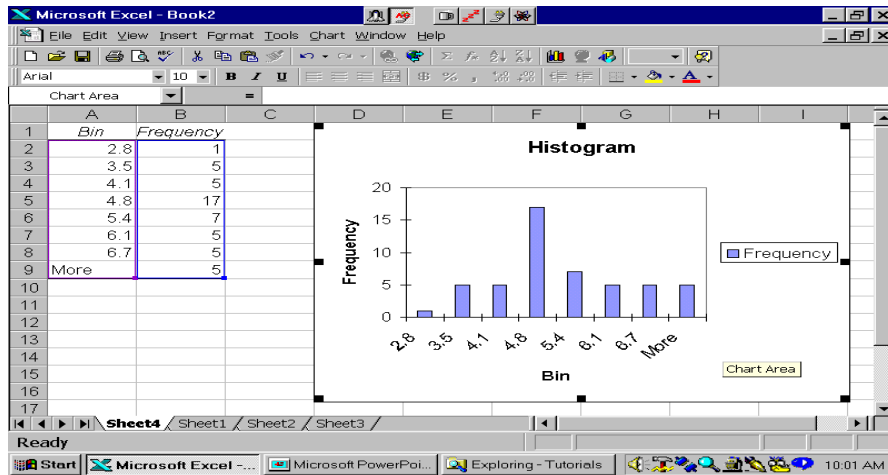
To Edit Axis Scale,
Highlight Bin Range and
Click Format Cells



Click Number and Enter
Desired Decimal Places



Here's the Chart. Now Remove the Legend.



Here's the Final Histogram

