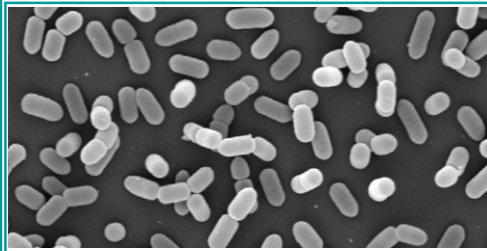


16th Discover Conference on Food Animal Agriculture:



Direct Fed Microbials/Prebiotics for Animals: Science and Mechanisms of Action

**April 19-22, 2009
Brown County Inn, Nashville, IN
Sponsored by American Dairy Science Association**

Conference Objectives

This Discover Conference will address a number of specific topics related to the successful use of direct fed microbials and prebiotics. Examples of topics include but are not limited to:

- bacterial species and strain selection
- mechanism of action
- delivery systems including stability of the bacteria
- animal species specific issues
- prebiotics

The conference will address direct fed microbials and/or prebiotics for dairy cattle, beef cattle, swine, poultry, aquaculture and pets.

ADSA DISCOVER Conferences
1111 North Dunlap Avenue
Savoy, IL 61874

16th Discover Conference
on Food Animal Agriculture:

**Direct Fed Microbials/Prebiotics for Animals:
Science and Mechanisms of Action**

April 19-22, 2009
The Brown County Inn in Nashville, Indiana
Sponsored by American Dairy Science Association

**Direct Fed Microbials/Prebiotics for Animals:
Science and Mechanisms of Action**

The interest in using direct fed microbials as feed supplements for various species of livestock has increased tremendously since the last Discover Conference on direct fed microbials (Prebiotics and Probiotics for Food Animals) held in 2000.

The understanding of the potential benefits of including probiotics (or direct fed microbials) in the diets of animals is far greater today than it was 10 years ago. Yet not all reported studies have shown positive results. This variability in results could result from several factors such as: improper selection of bacterial culture for the probiotic, poor viability of the culture at time of consumption, improper numbers of viable organisms in the product, improper growth of the bacterial culture for use in the product among others.

Who Should Attend?

Research scientists, nutrition consultants, producers, companies marketing direct fed microbials and prebiotics, advanced graduate students, feed company representatives, pet food company representatives, food company representatives, government/regulatory agency reps, international academic scientists, postdoctorates and veterinarians are encouraged to participate in this interactive program.

Conference Format

The Discover Conference Series was designed to provide a format and venue that encourages in-depth discussion of cutting-edge science.

ADSA Discover ConferencesSM focus on topics of importance to the science of food animal agriculture and are held in a relaxed, informal setting. Sessions for this conference will allow ample time for discussion, networking, scientific exchange and relaxation.

Registration Fee

Registration postmarked by March 19, 2009 is \$395.00, which includes sessions and most meals. After March 19, the registration fee will be \$495.00 and will be accepted on an availability basis. To optimize interaction among participants, registration will be limited to the first 120 applications received.

Accommodations

The conference will be held at The Brown County Inn in Nashville, Indiana. All participants are responsible for making their own lodging reservations. Reservations can be made online at <http://www.adsa.org/discover/>.

Location

Perched atop one of Brown County, Indiana's softly rolling hills, The Brown County Inn welcomes visitors with charming, rustic architecture and warm interior that complement the panoramic view of wooded hills. The adjacent Brown County State Park offers miles of hiking trails, lakes and golf courses, as well as pool and tennis facilities. Nashville is a popular vacation site because of the pleasant countryside, abundance of artist studios and galleries, and various types of craftsmen.

Travel

The site is about one hour south of the Indianapolis International Airport and is easily accessible from I-65. Shuttle service and rental cars are available at the airport. Advance reservations are necessary for shuttle service. The meeting site is 15 miles off I-65 and is midway between Columbus and Bloomington, Indiana.

For the Latest Conference Information

go to:

<http://www.adsa.org/discover/>



